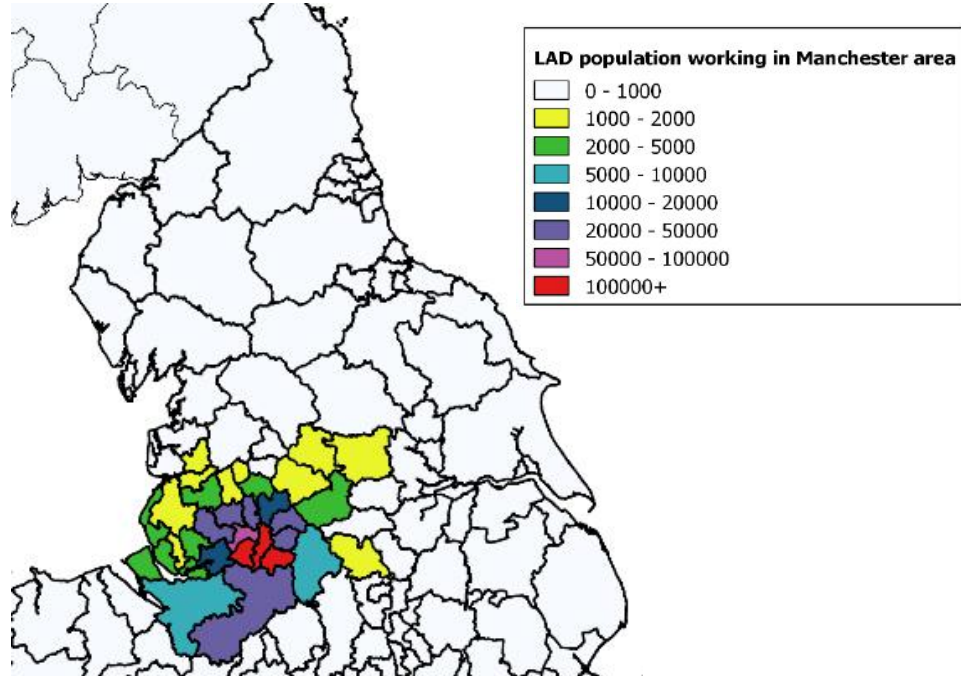


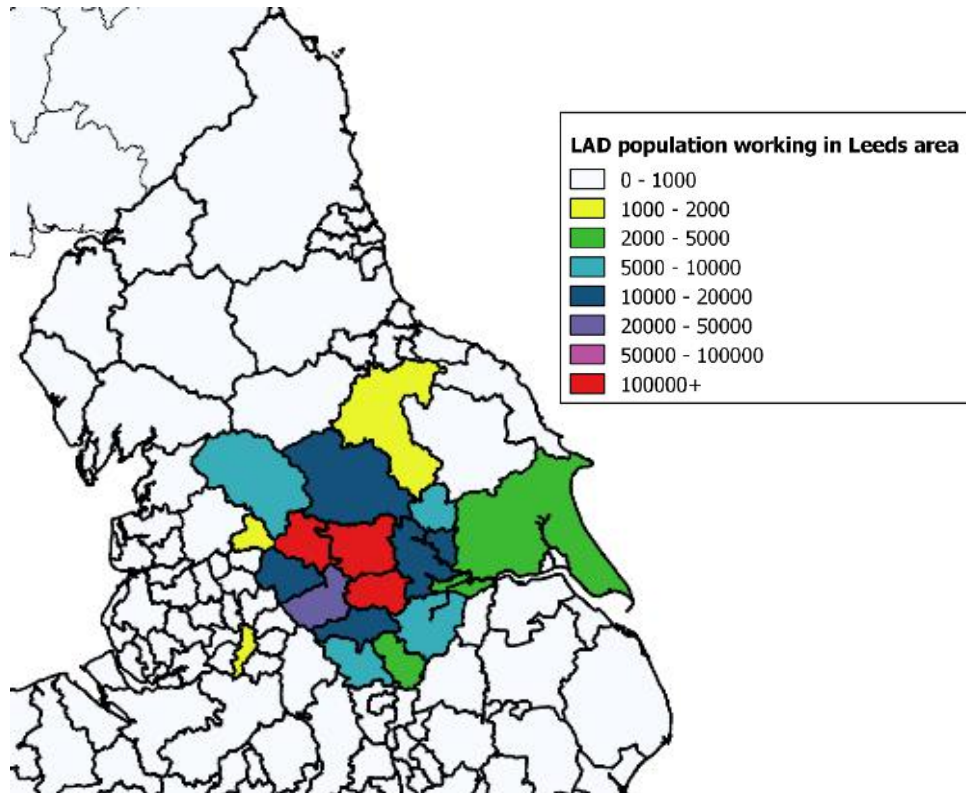
Appendix A Origins of workers in 2011

Figure A.1: Origins of workers in Manchester, Stockport, Salford and Trafford



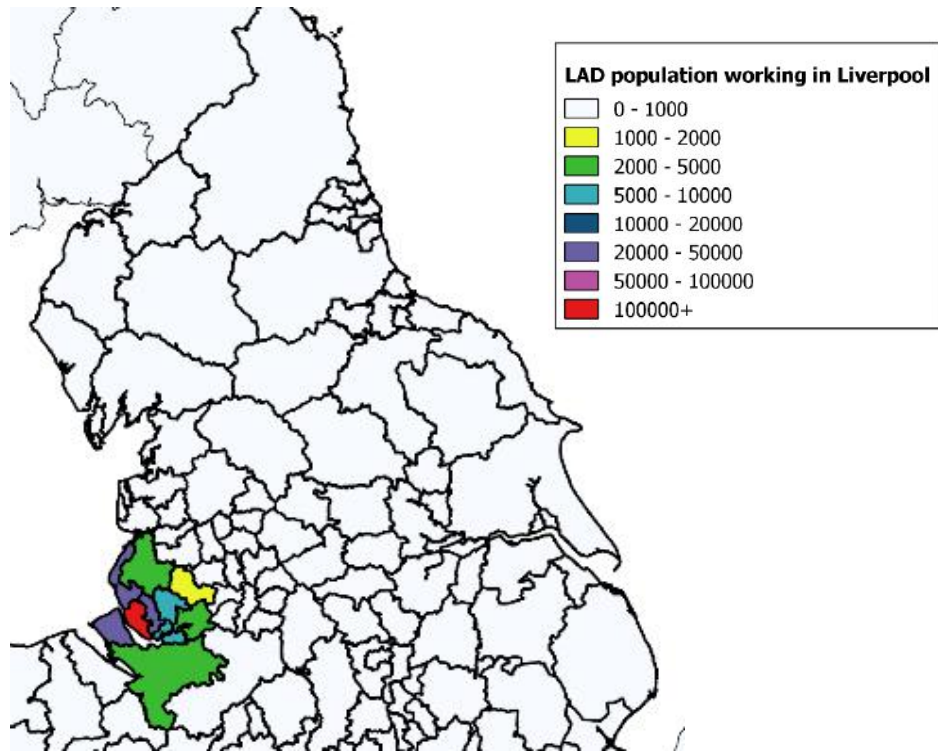
Source: Cambridge Econometrics.

Figure A.2: Origins of workers in Leeds, Bradford & Wakefield



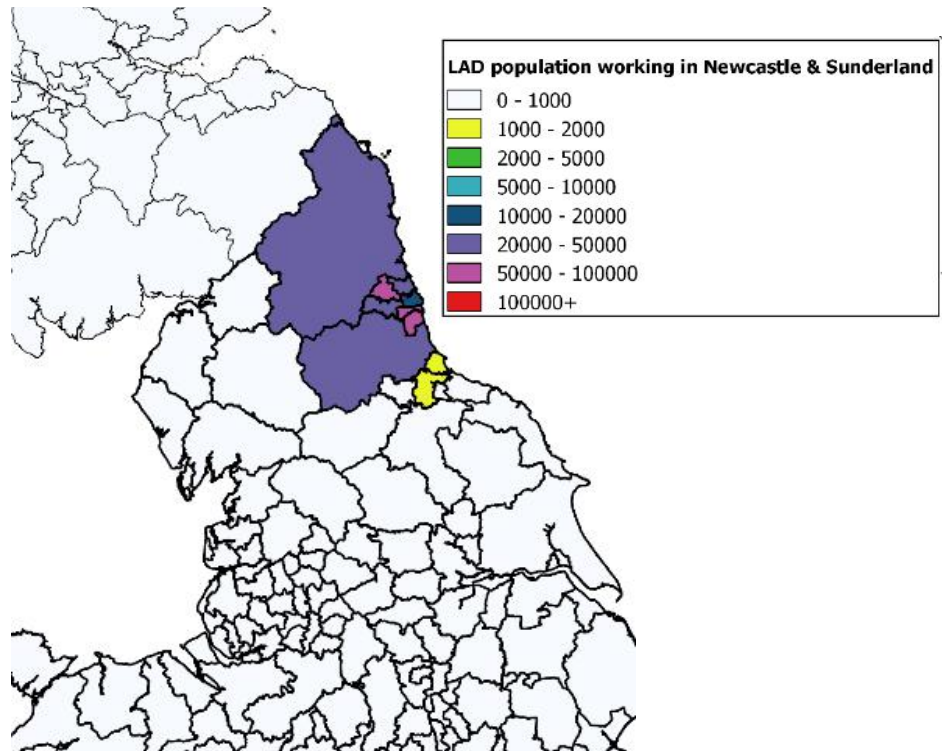
Source: Cambridge Econometrics.

Figure A.3: Origins of workers in Liverpool



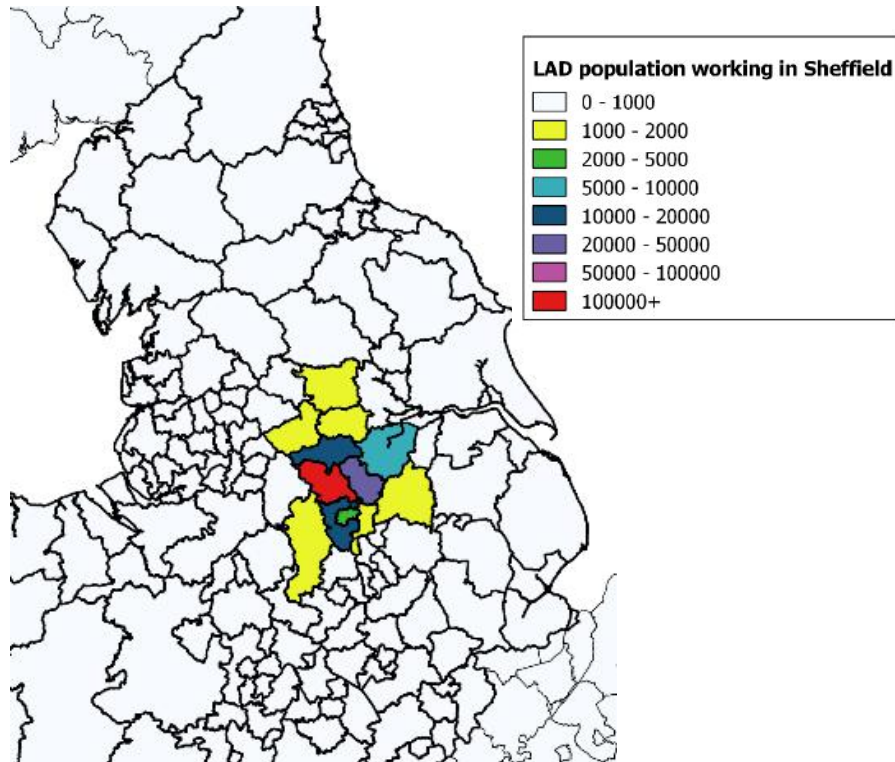
Source: Cambridge Econometrics.

Figure A.4: Origins of workers in Newcastle & Sunderland



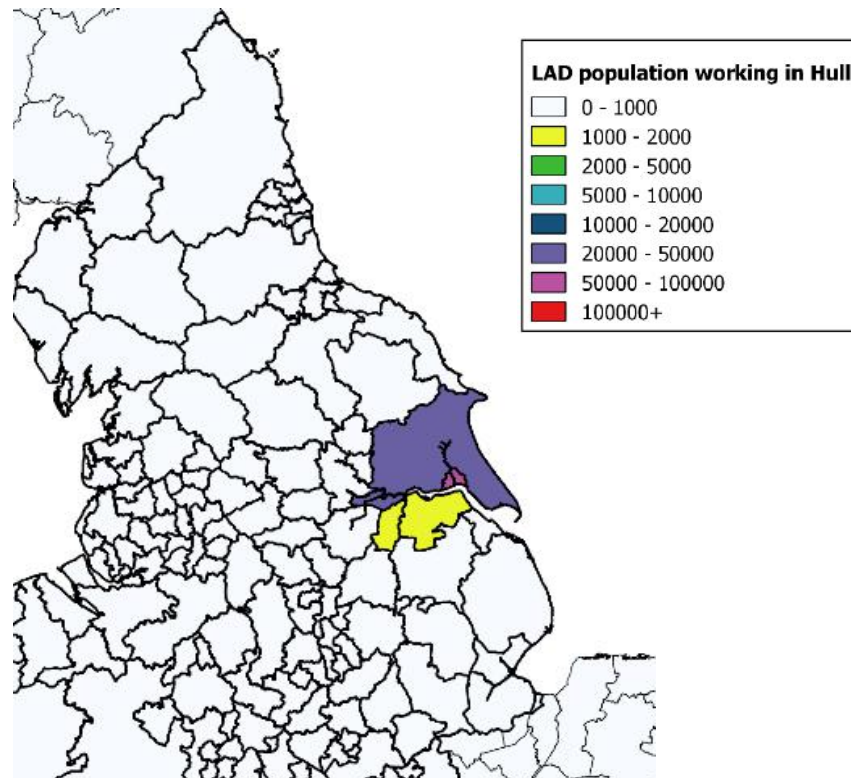
Source: Cambridge Econometrics.

Figure A.5: Origins of workers in Sheffield



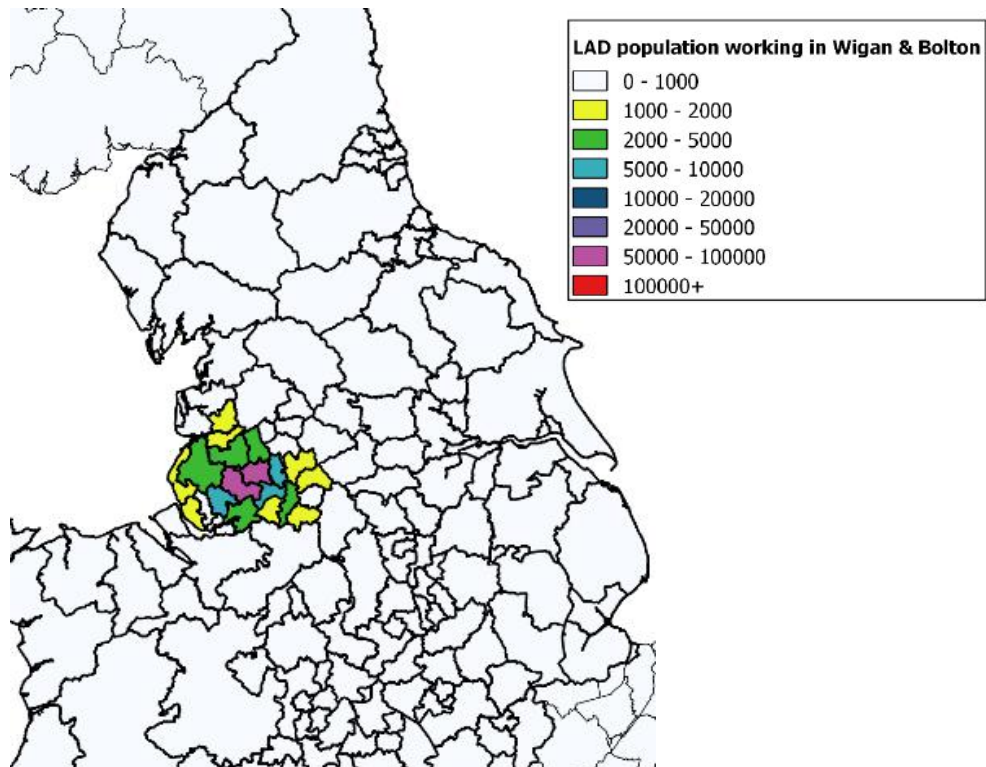
Source: Cambridge Econometrics.

Figure A.6: Origins of workers in Hull



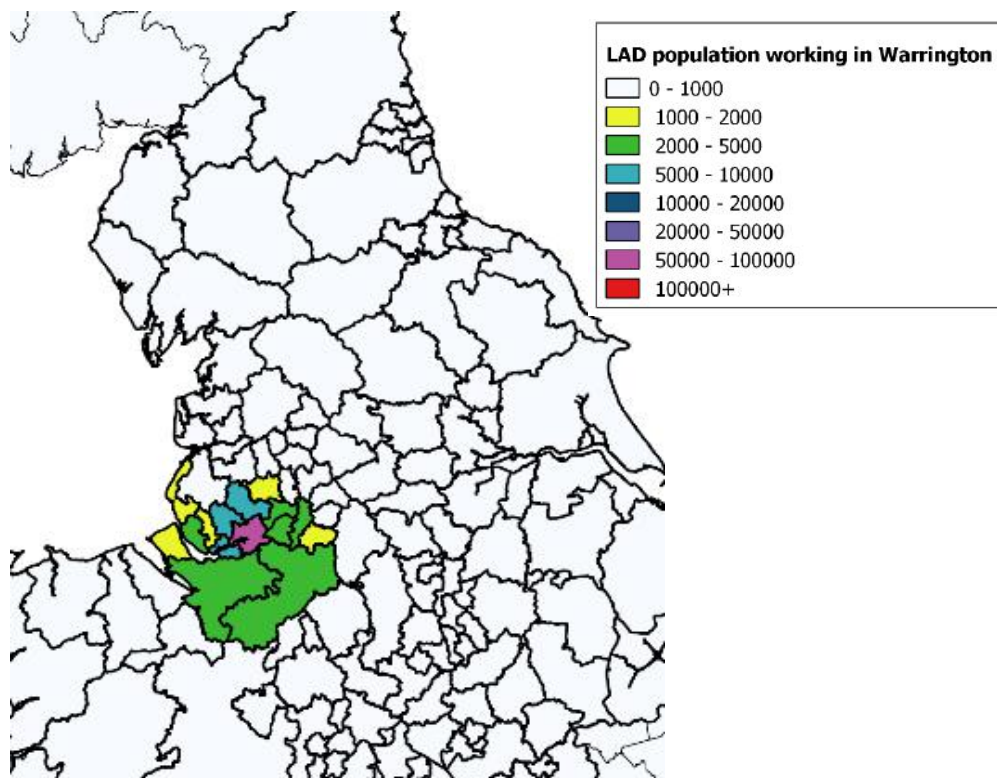
Source: Cambridge Econometrics.

Figure A.7: Origins of workers in Wigan & Bolton



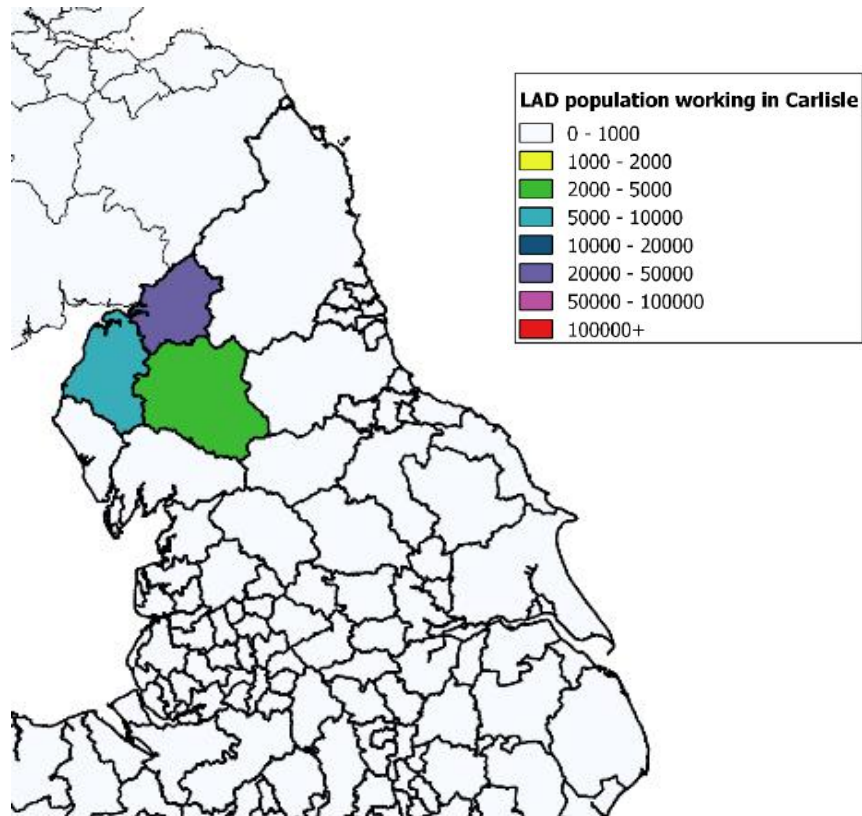
Source: Cambridge Econometrics.

Figure A.8: Origins of workers in Warrington



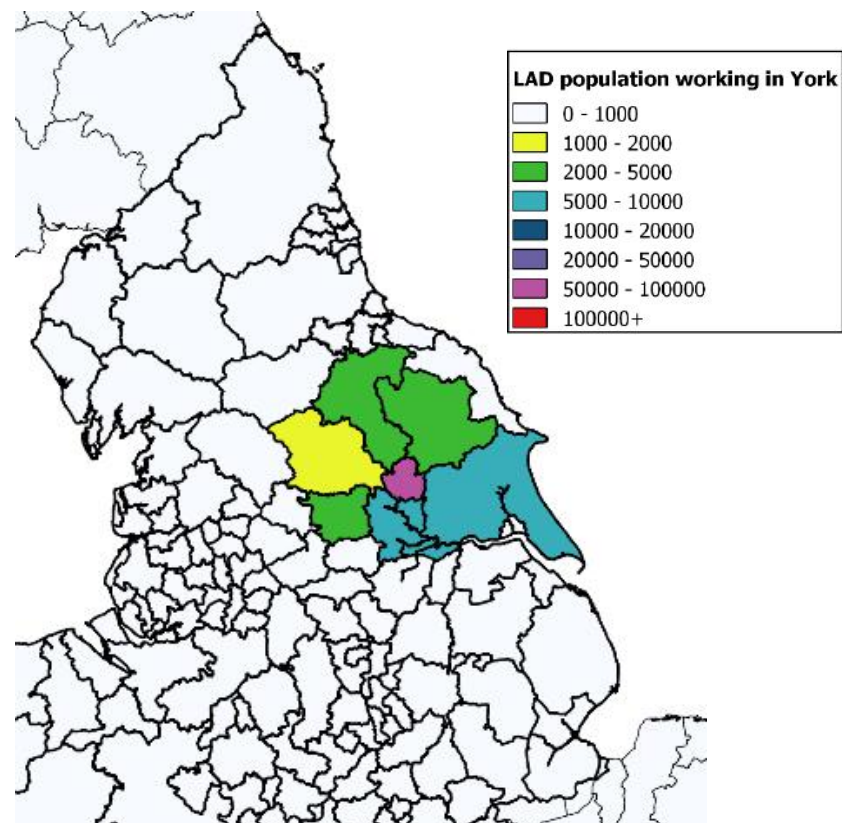
Source: Cambridge Econometrics.

Figure A.9: Origins of workers in Carlisle

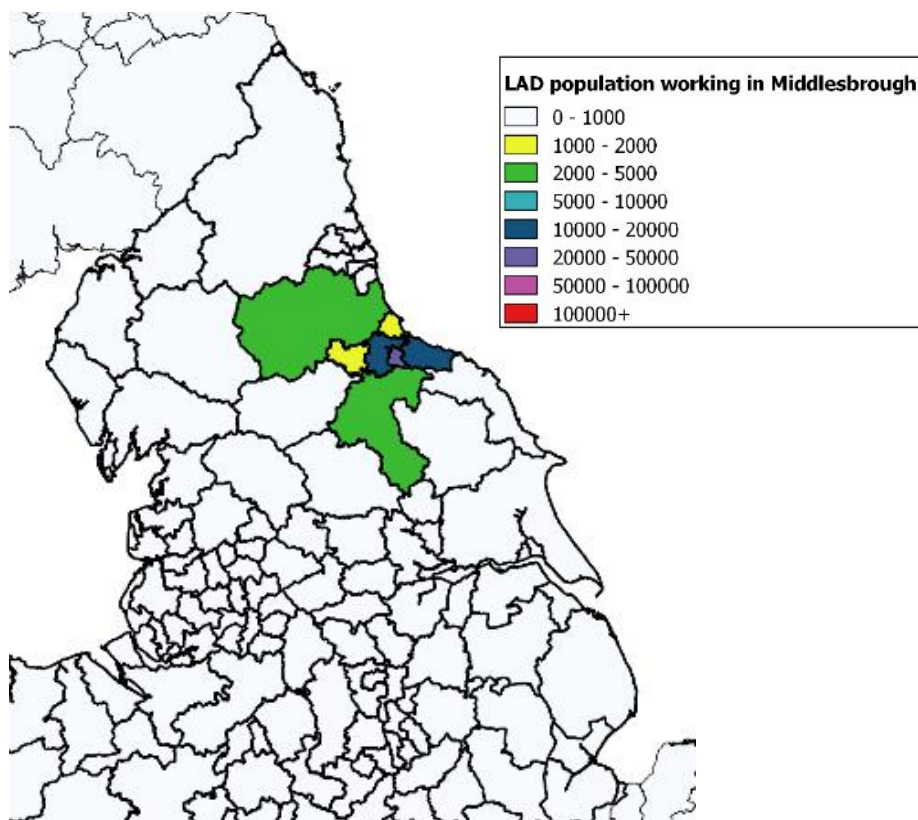


Source: Cambridge Econometrics.

Figure A.10: Origins of workers in York



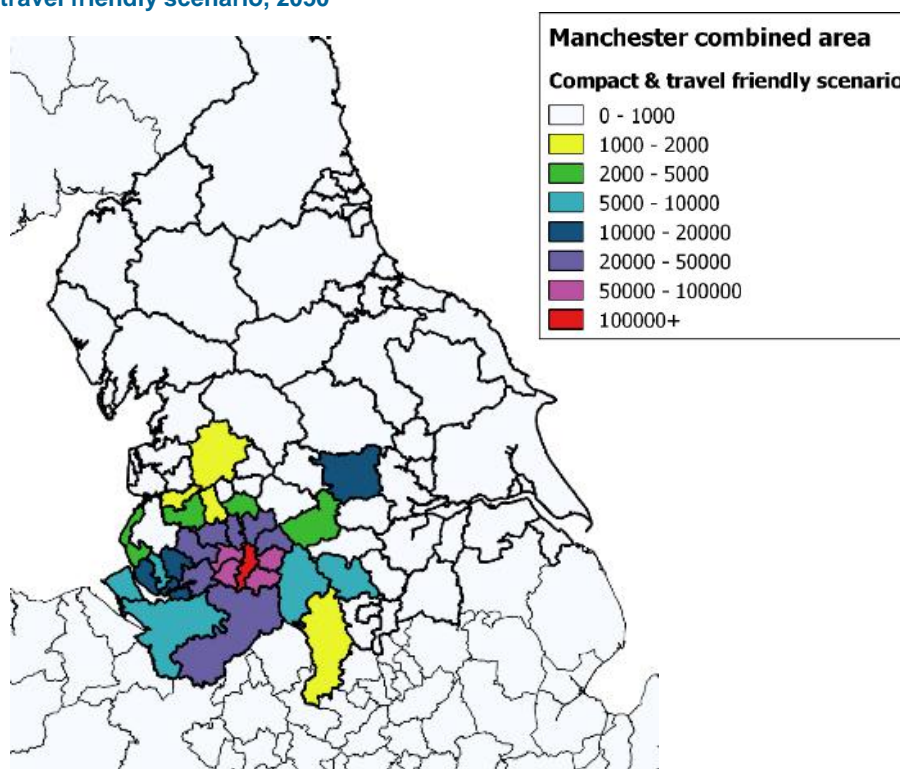
Source: Cambridge Econometrics.

Figure A.11: Origins of workers in Middlesbrough

Source: Cambridge Econometrics.

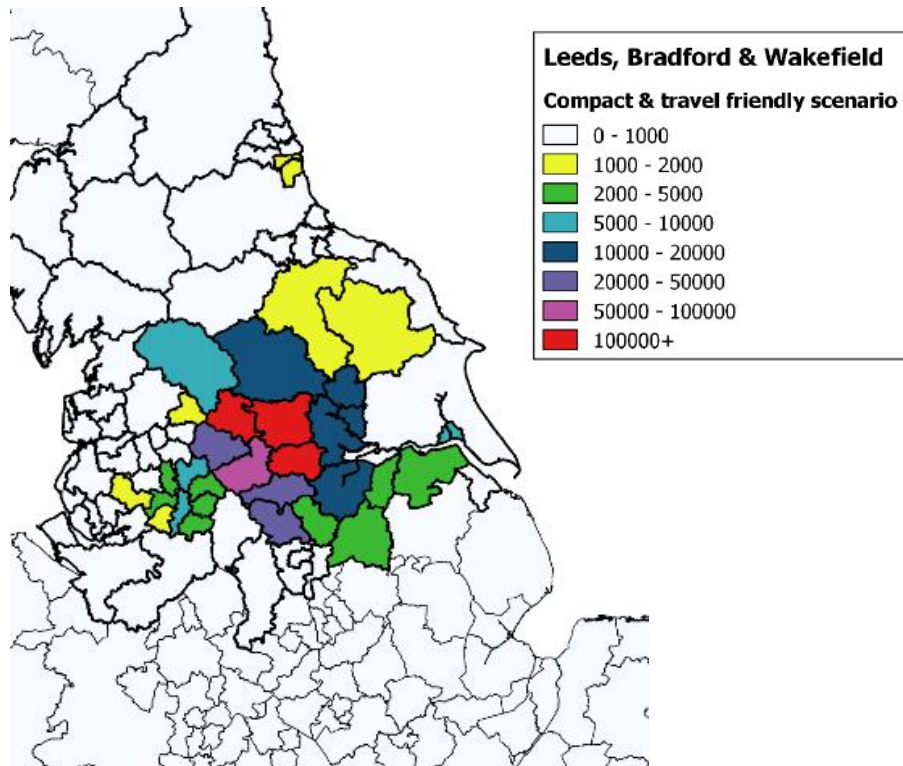
Appendix B Origins of workers under the Compact and Travel Friendly Scenario in 2050

Figure B.1: Origins of workers in Manchester combined area under the Compact and travel friendly scenario, 2050



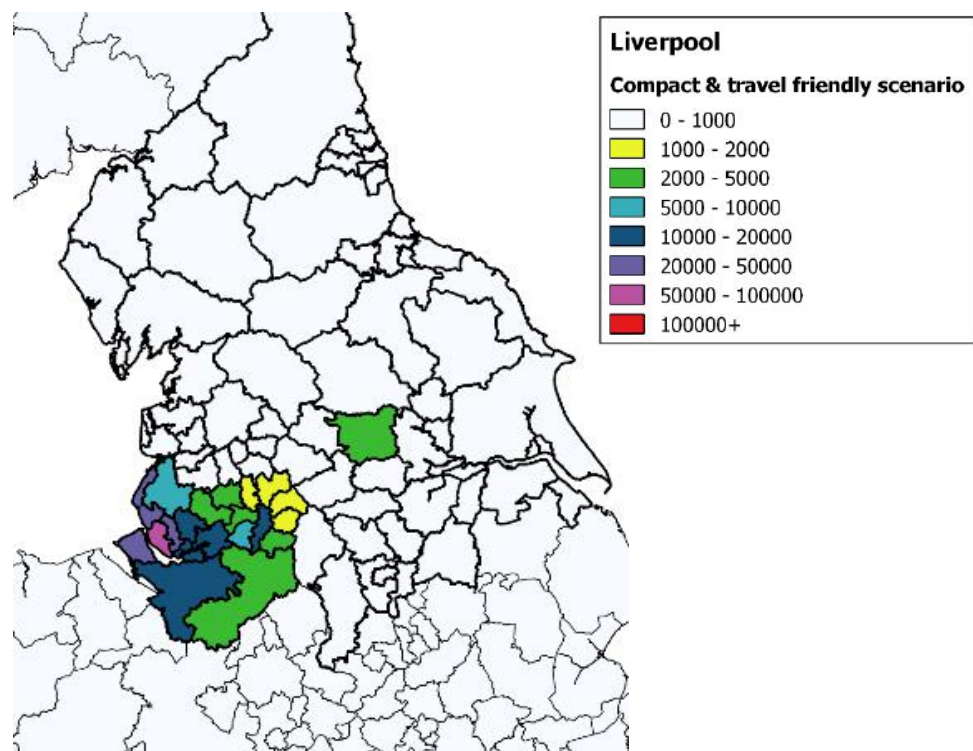
Source: Cambridge Econometrics.

Figure B.2: Origins of workers in Leeds, Bradford & Wakefield under the Compact and travel friendly scenario, 2050



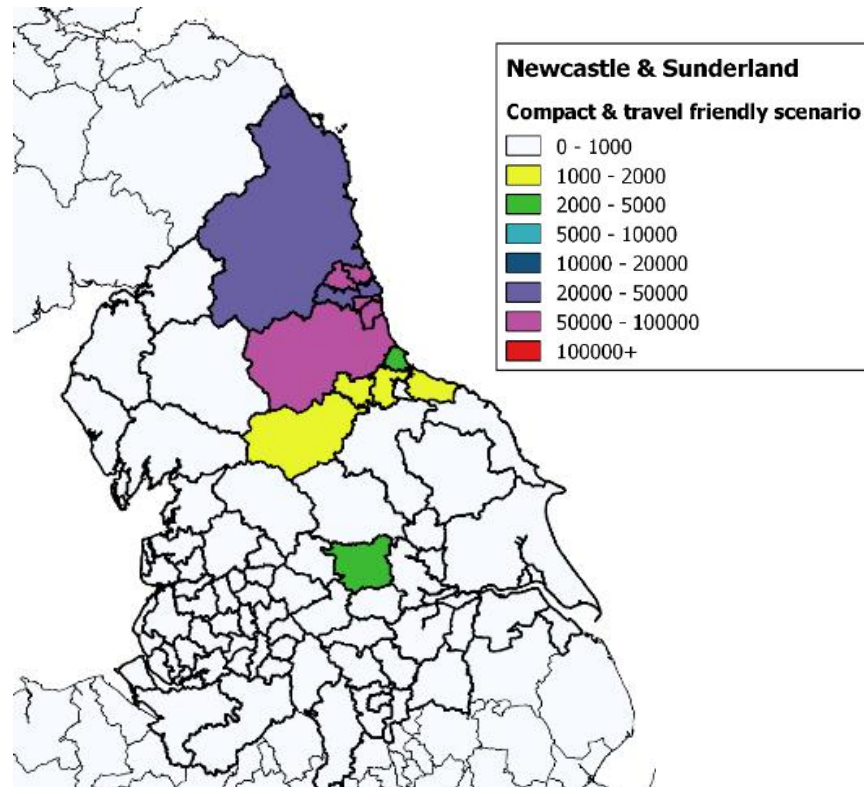
Source: Cambridge Econometrics.

Figure B.3: Origins of workers in Liverpool under the Compact and travel friendly scenario, 2050



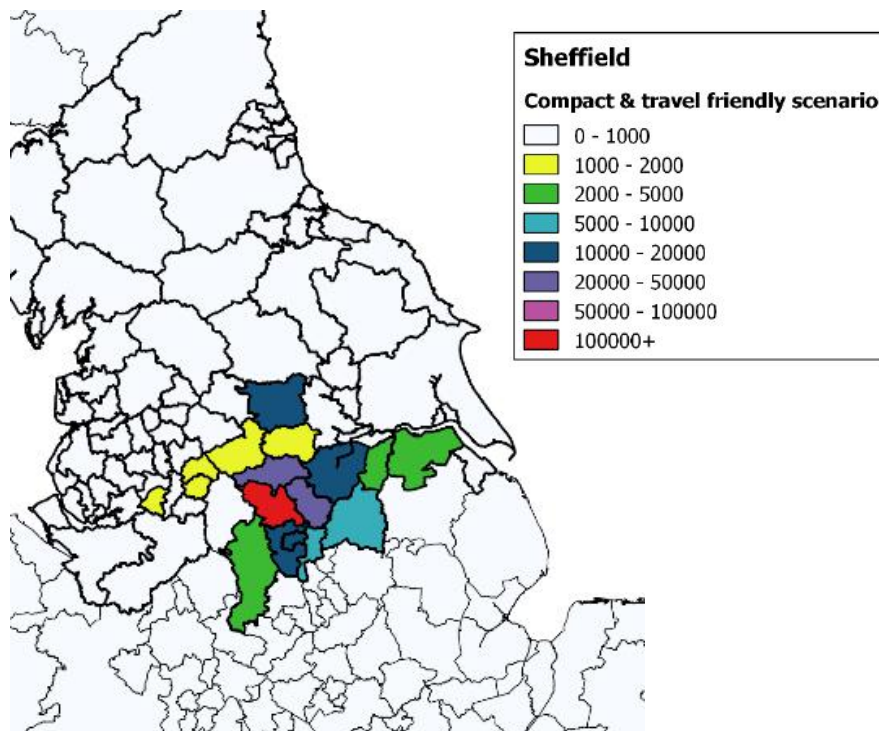
Source: Cambridge Econometrics.

Figure B.4: Origins of workers in Newcastle & Sunderland under the Compact and travel friendly scenario, 2050



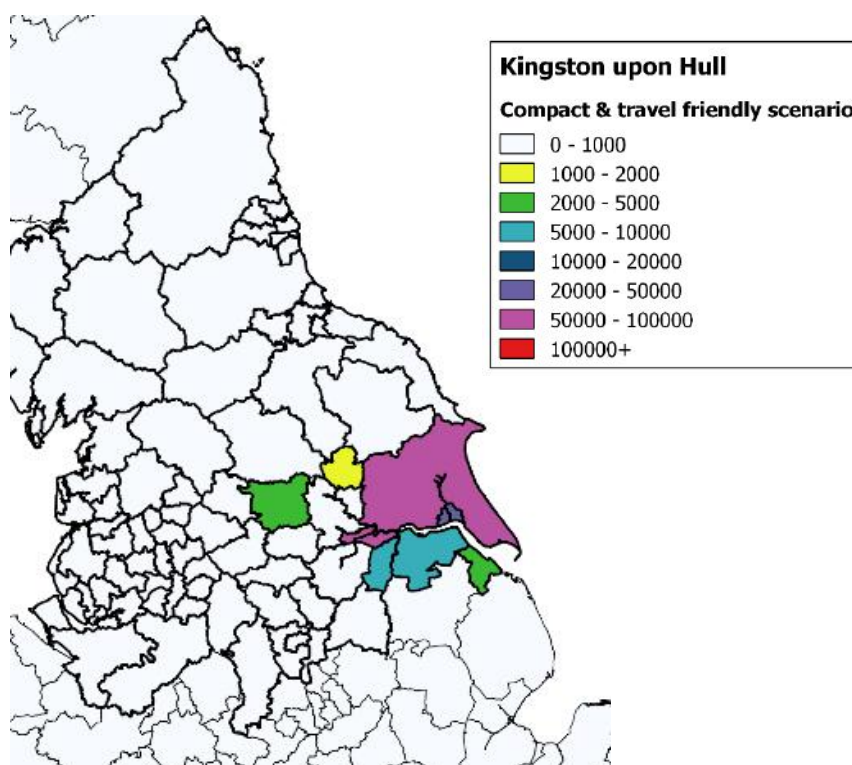
Source: Cambridge Econometrics.

Figure B.5: Origins of workers in Sheffield under the Compact and travel friendly scenario, 2050



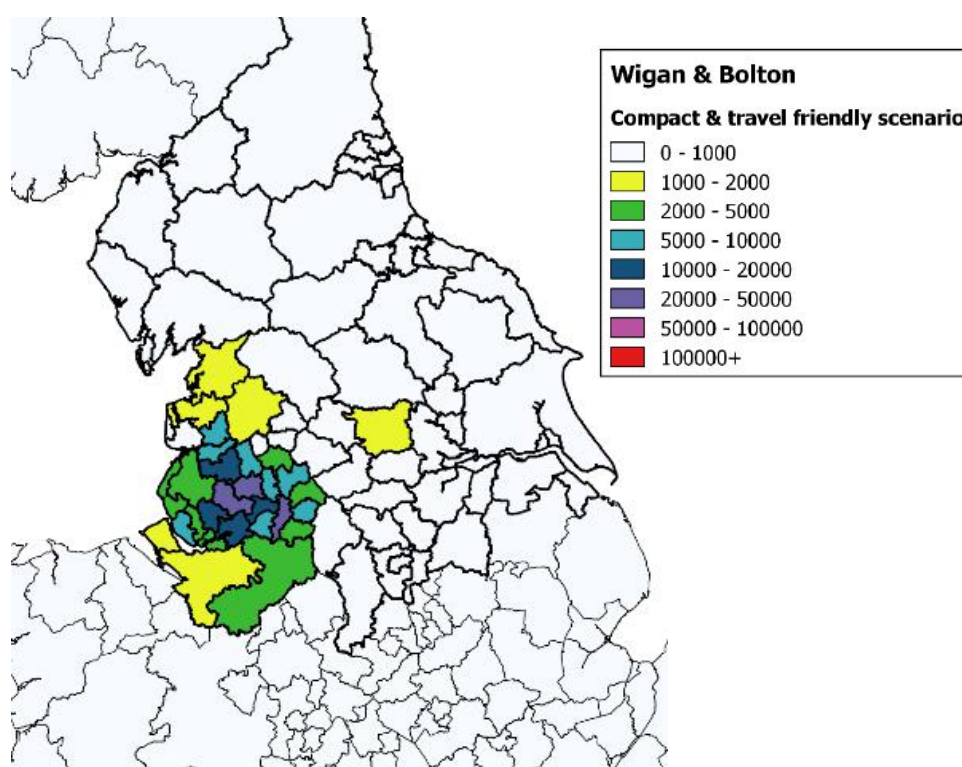
Source: Cambridge Econometrics.

Figure B.6: Origins of workers in Hull under the Compact and travel friendly scenario, 2050



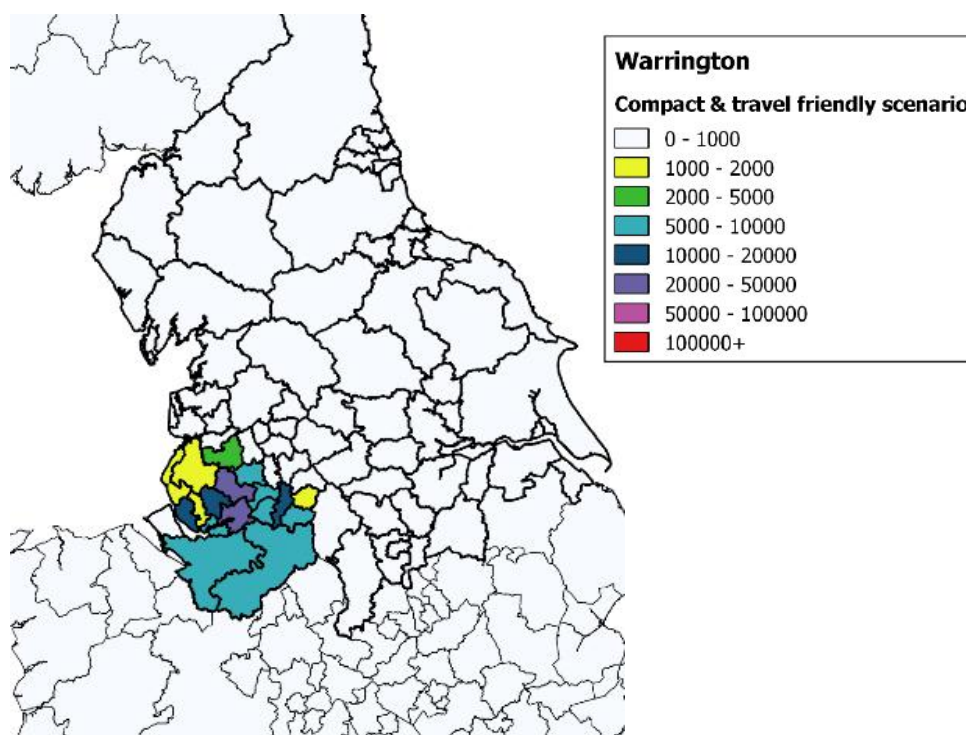
Source: Cambridge Econometrics.

Figure B.7: Origins of workers in Wigan & Bolton under the Compact and travel friendly scenario, 2050



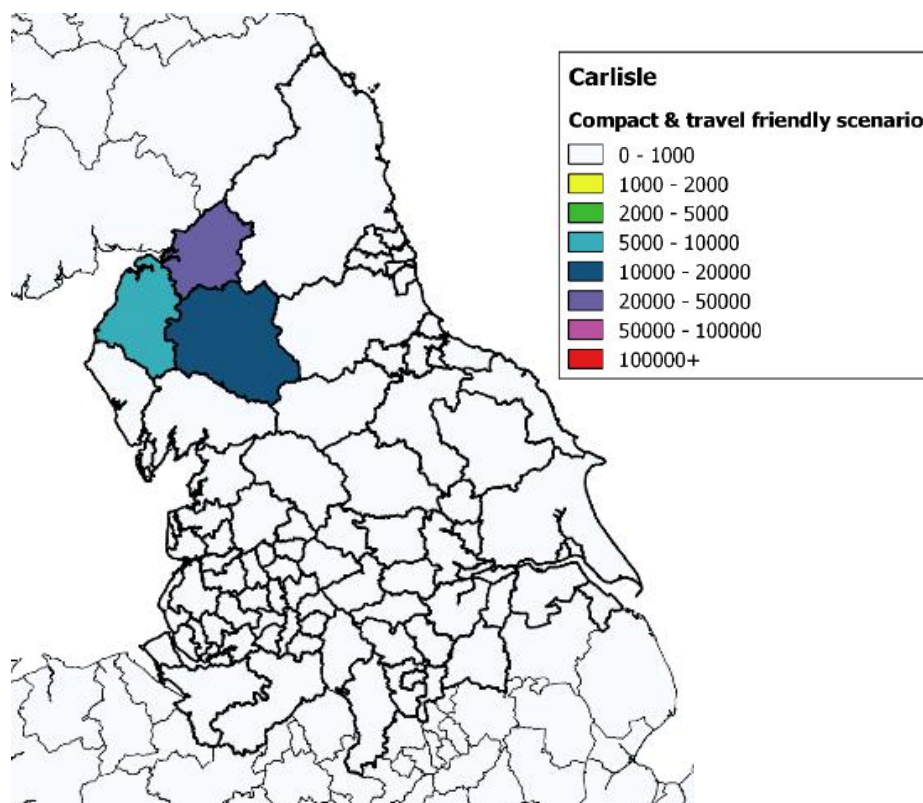
Source: Cambridge Econometrics.

Figure B.8: Origins of workers in Warrington under the Compact and travel friendly scenario, 2050



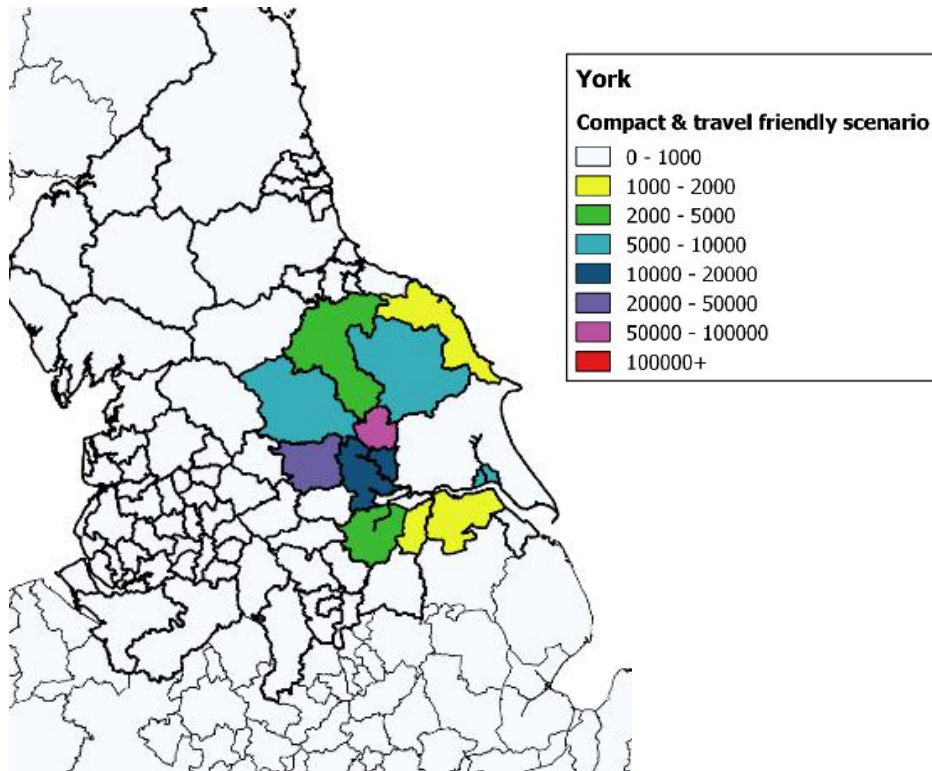
Source: Cambridge Econometrics.

Figure B.9: Origins of workers in Carlisle under the Compact and travel friendly scenario, 2050



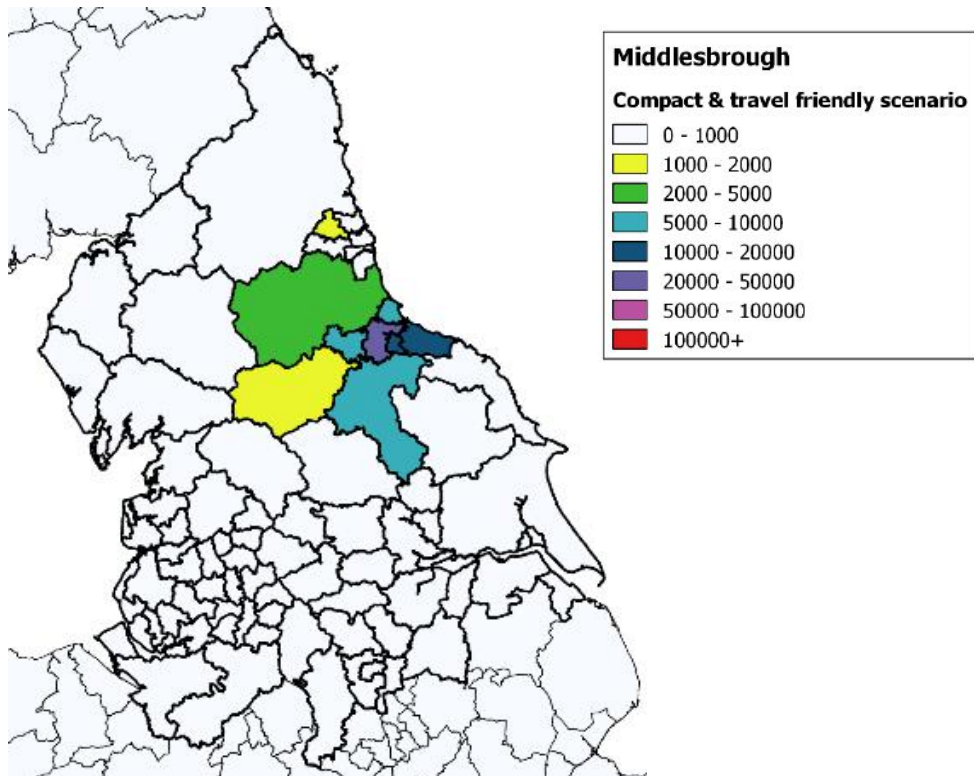
Source: Cambridge Econometrics.

Figure B.10: Origins of workers in York under the Compact and travel friendly scenario, 2050



Source: Cambridge Econometrics.

Figure B.11: Origins of workers in Middlesbrough under the Compact and travel friendly scenario, 2050

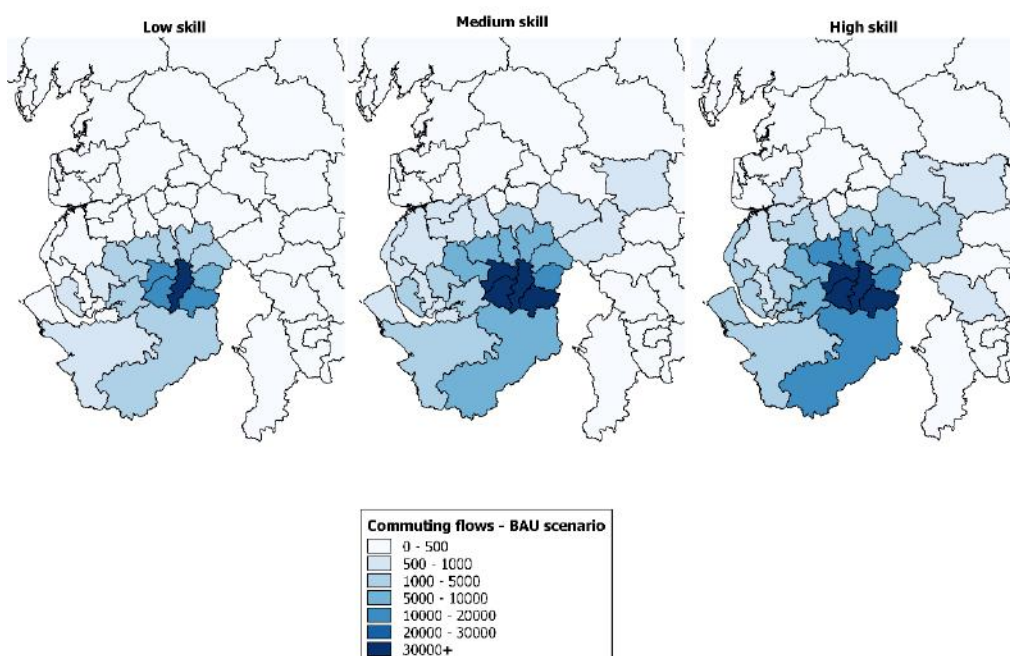


Source: Cambridge Econometrics.

Appendix C Origins of workers by skill level and scenario in 2050

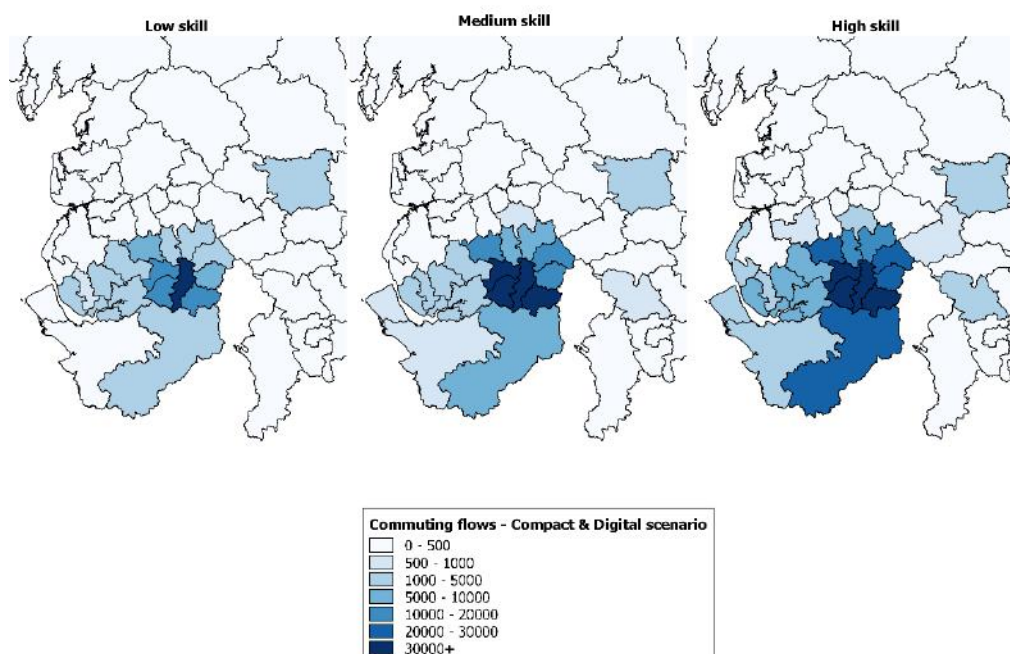
**Manchester,
Stockport,
Salford and
Trafford**

Figure C.1: Origins of workers in Manchester, Stockport, Salford and Trafford by skill level under the BAU scenario, 2050



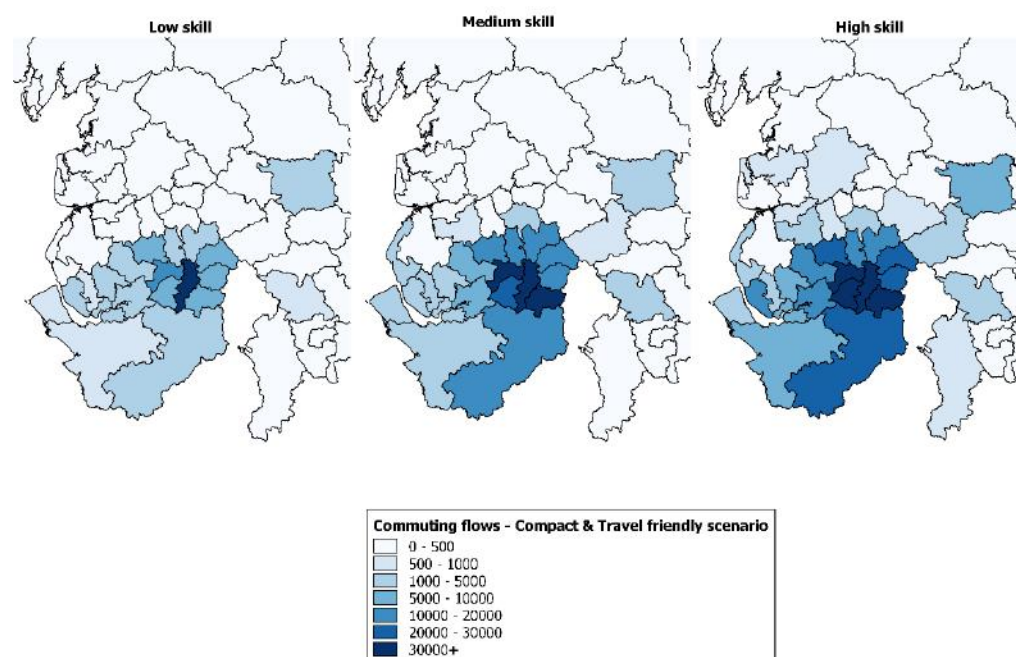
Source: Cambridge Econometrics.

Figure C.2: Origins of workers in Manchester, Stockport, Salford and Trafford by skill level under the Compact & digital scenario, 2050



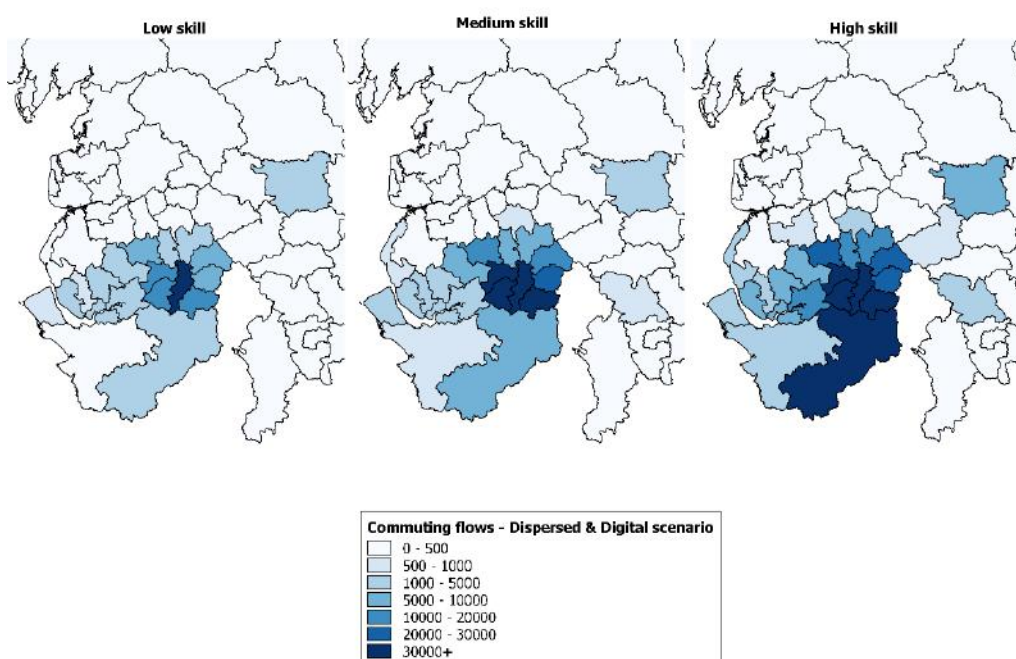
Source: Cambridge Econometrics.

Figure C.3: Origins of workers in Manchester, Stockport, Salford and Trafford by skill level under the Compact & travel friendly scenario, 2050



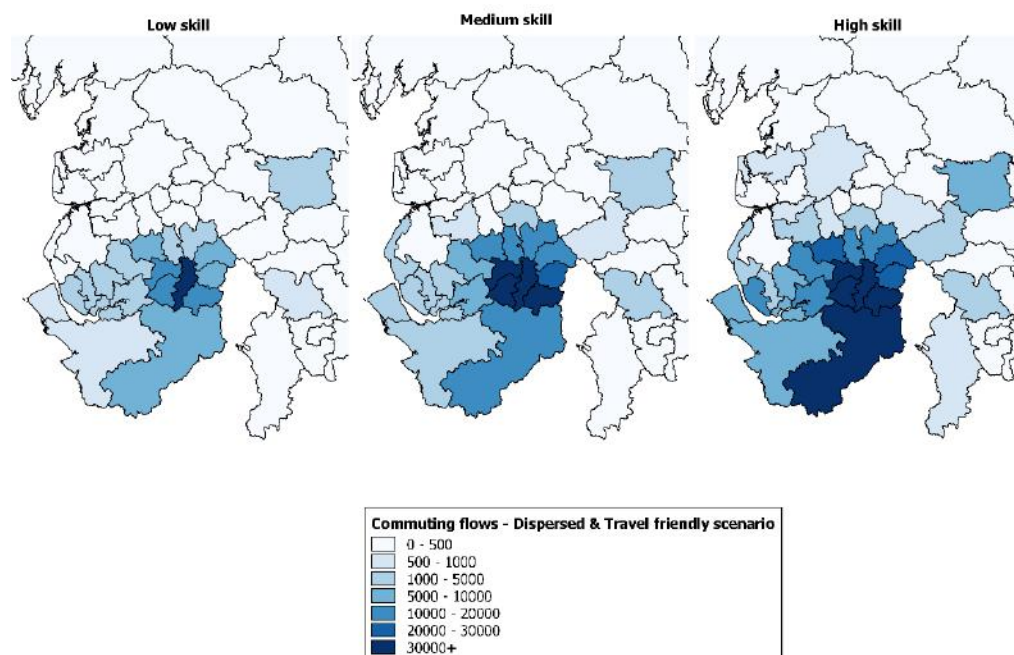
Source: Cambridge Econometrics.

Figure C.4: Origins of workers in Manchester, Stockport, Salford and Trafford by skill level under the Dispersed & digital scenario, 2050



Source: Cambridge Econometrics.

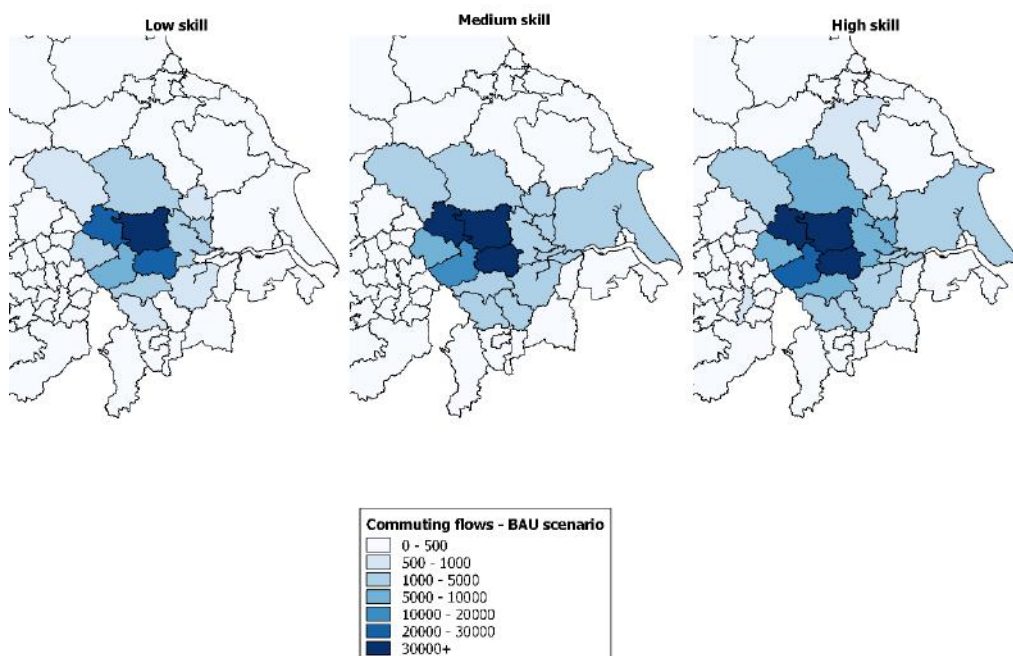
Figure C.5: Origins of workers in Manchester, Stockport, Salford and Trafford by skill level under the Dispersed & travel friendly scenario, 2050



Source: Cambridge Econometrics.

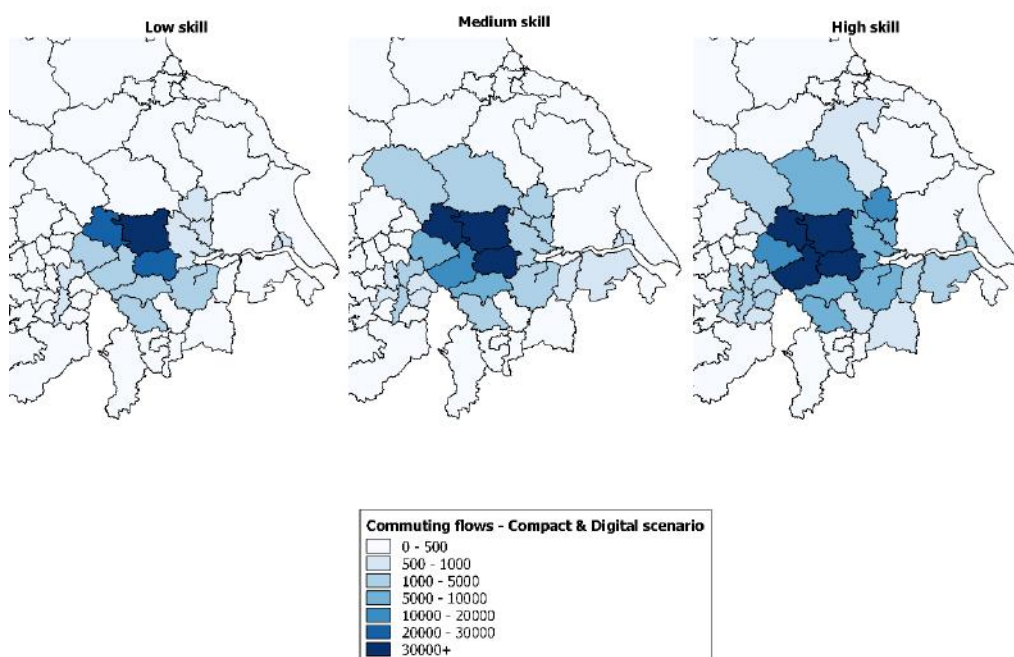
Leeds, Bradford & Wakefield

Figure C.6: Origins of workers in Leeds, Bradford & Wakefield by skill level under the BAU scenario, 2050



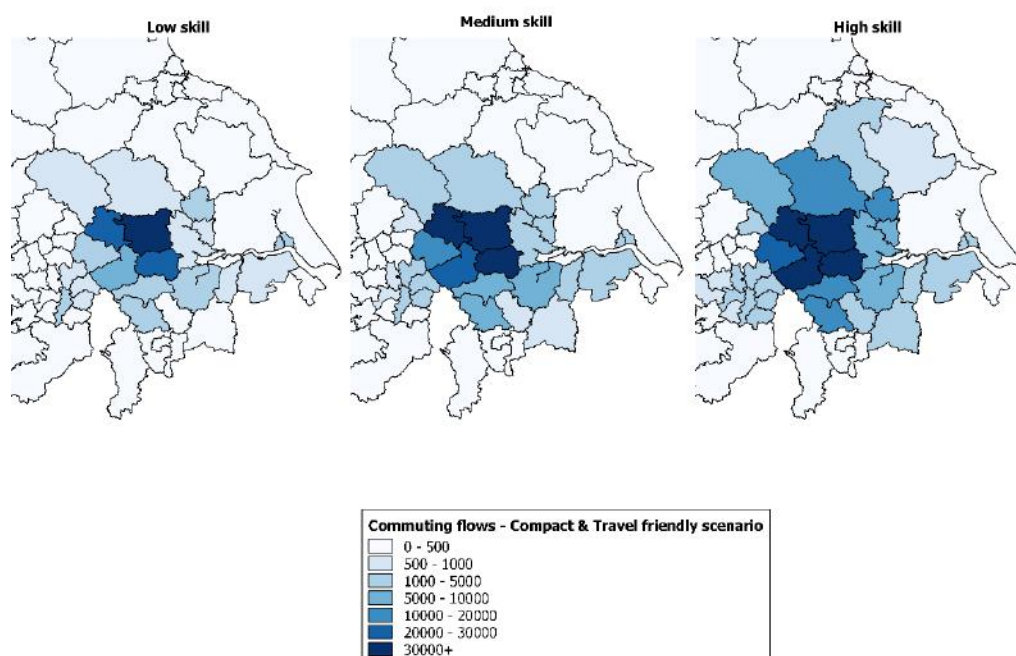
Source: Cambridge Econometrics.

Figure C.7: Origins of workers in Leeds, Bradford & Wakefield by skill level under the Compact & digital scenario, 2050



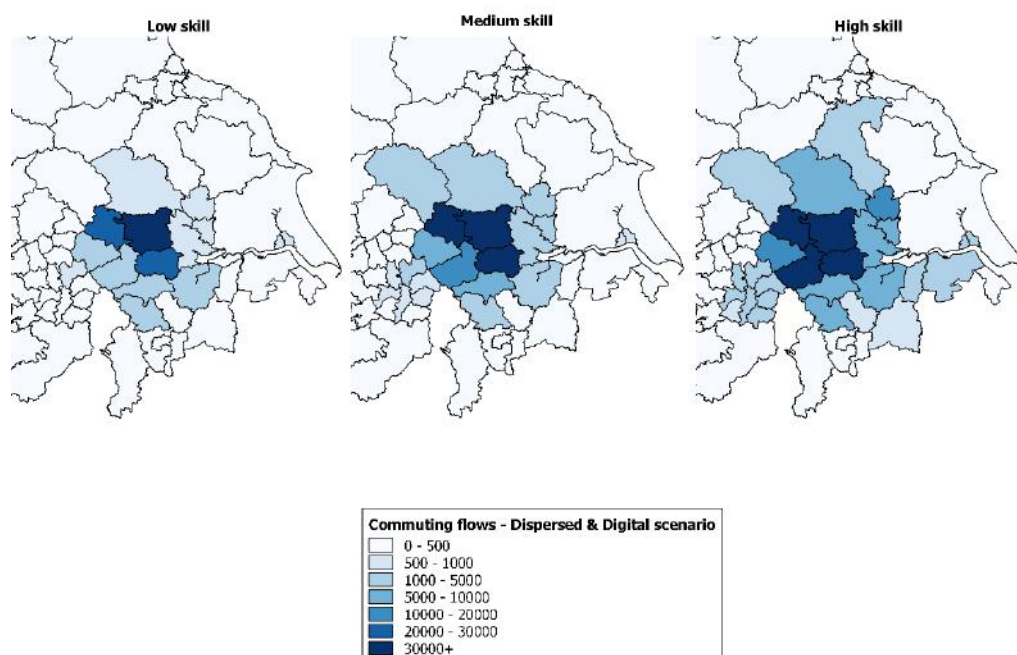
Source: Cambridge Econometrics.

Figure C.8: Origins of workers in Leeds, Bradford & Wakefield by skill level under the Compact & travel friendly scenario, 2050



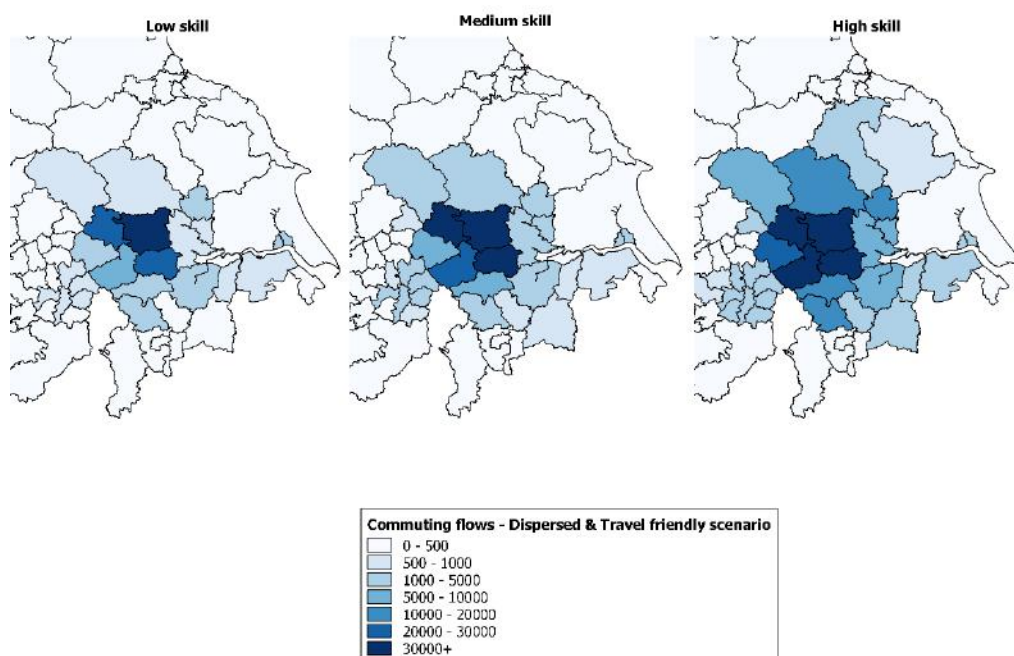
Source: Cambridge Econometrics.

Figure C.9: Origins of workers in Leeds, Bradford & Wakefield by skill level under the Dispersed & digital scenario, 2050



Source: Cambridge Econometrics.

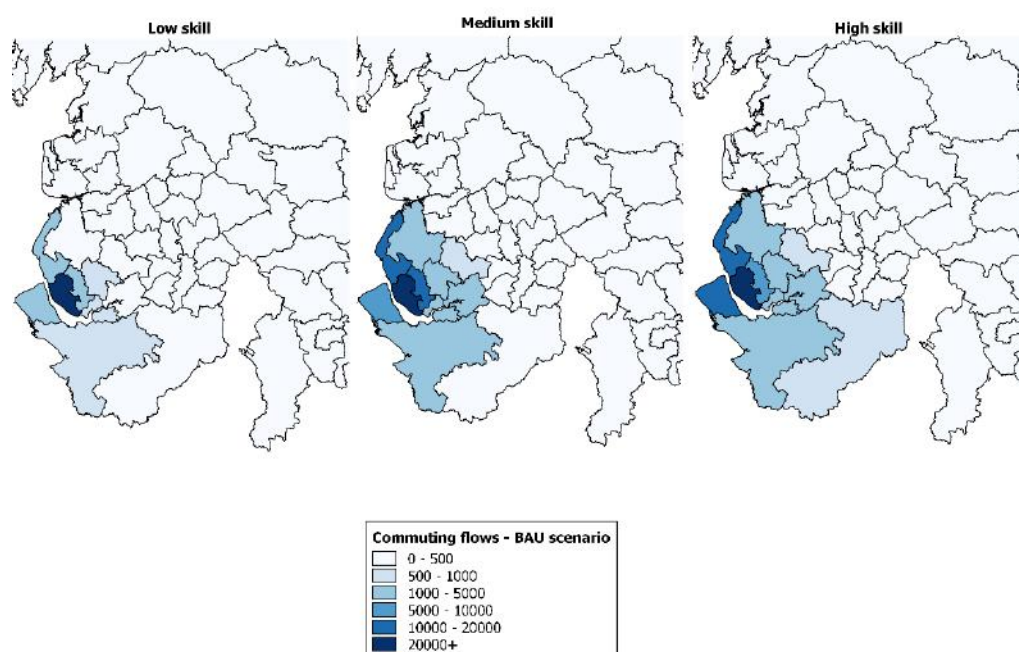
Figure C.10: Origins of workers in Leeds, Bradford & Wakefield by skill level under the Dispersed & travel friendly scenario, 2050



Source: Cambridge Econometrics.

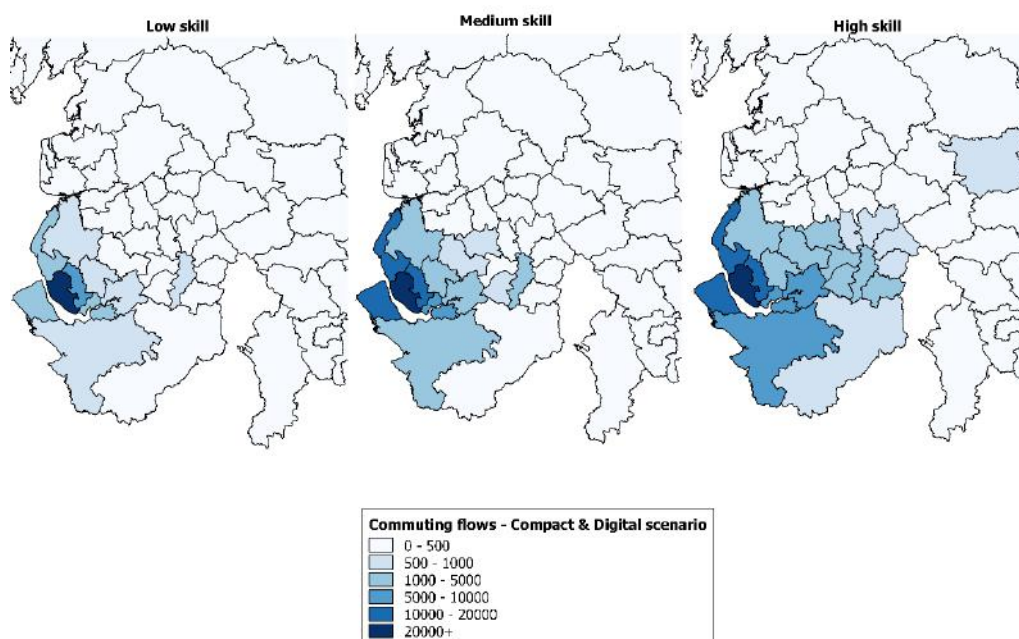
Liverpool

Figure C.11: Origins of workers in Liverpool by skill level under the BAU scenario, 2050



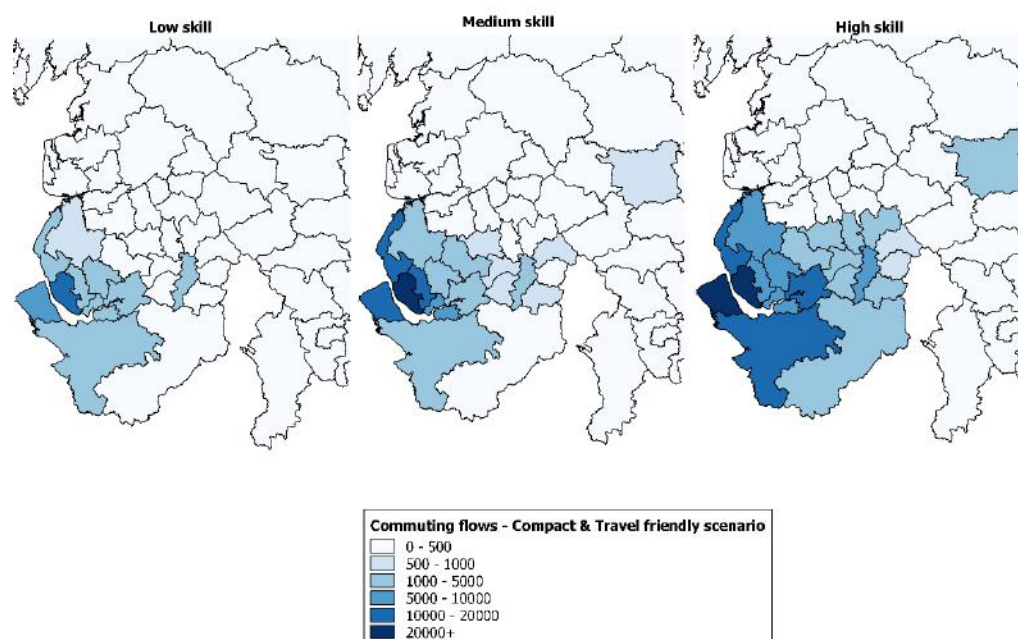
Source: Cambridge Econometrics.

Figure C.12: Origins of workers in Liverpool by skill level under the Compact & digital scenario, 2050



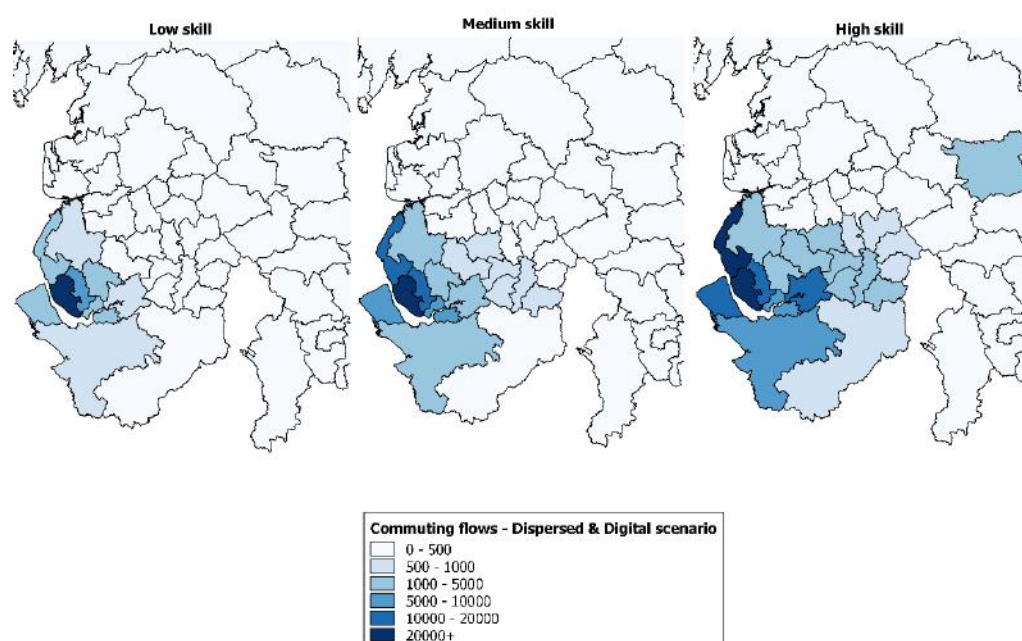
Source: Cambridge Econometrics.

Figure C.13: Origins of workers in Liverpool by skill level under the Compact & travel friendly scenario, 2050



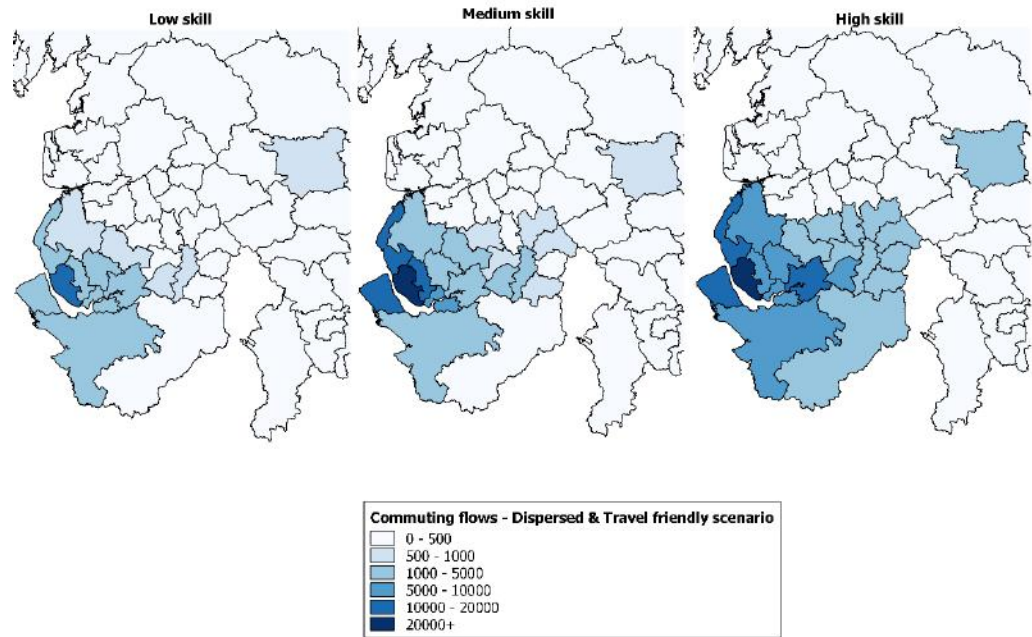
Source: Cambridge Econometrics.

Figure C.14: Origins of workers in Liverpool by skill level under the Dispersed & digital scenario, 2050



Source: Cambridge Econometrics.

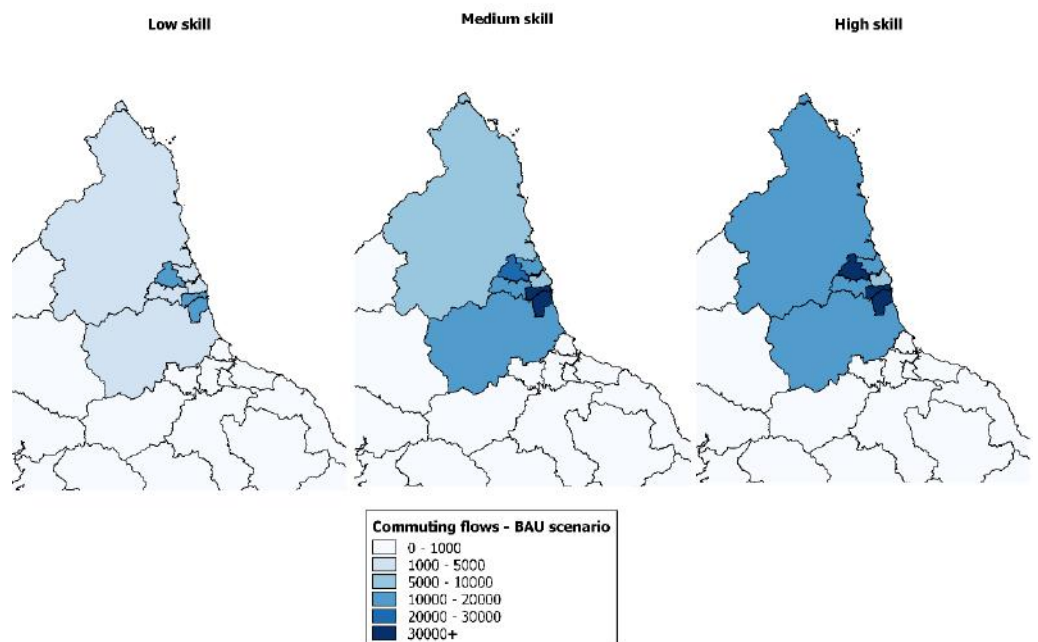
Figure C.15: Origins of workers in Liverpool by skill level under the Dispersed & travel friendly scenario, 2050



Source: Cambridge Econometrics.

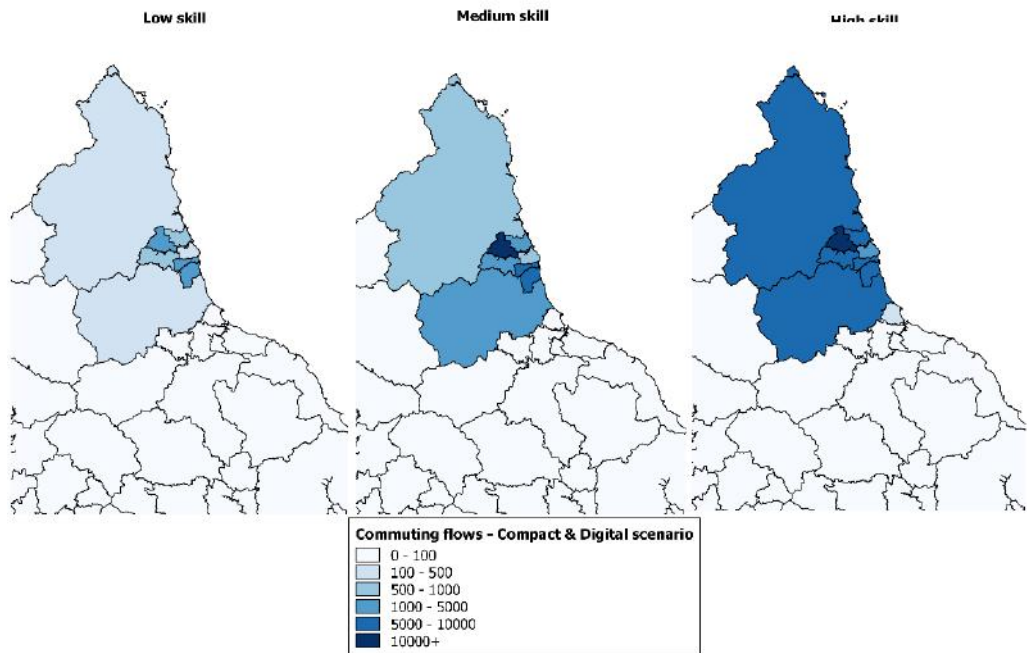
Newcastle & Sunderland

Figure C.16: Origins of workers in Newcastle & Sunderland Bolton by skill level under the BAU scenario, 2050



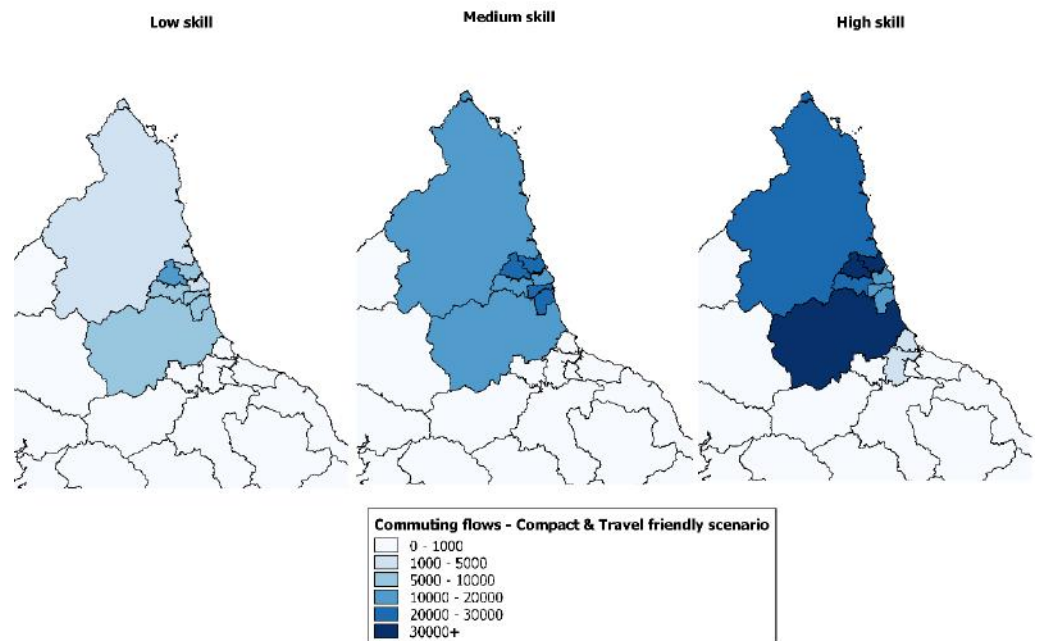
Source: Cambridge Econometrics.

Figure C.17: Origins of workers in Newcastle & Sunderland by skill level under the Compact & digital scenario, 2050



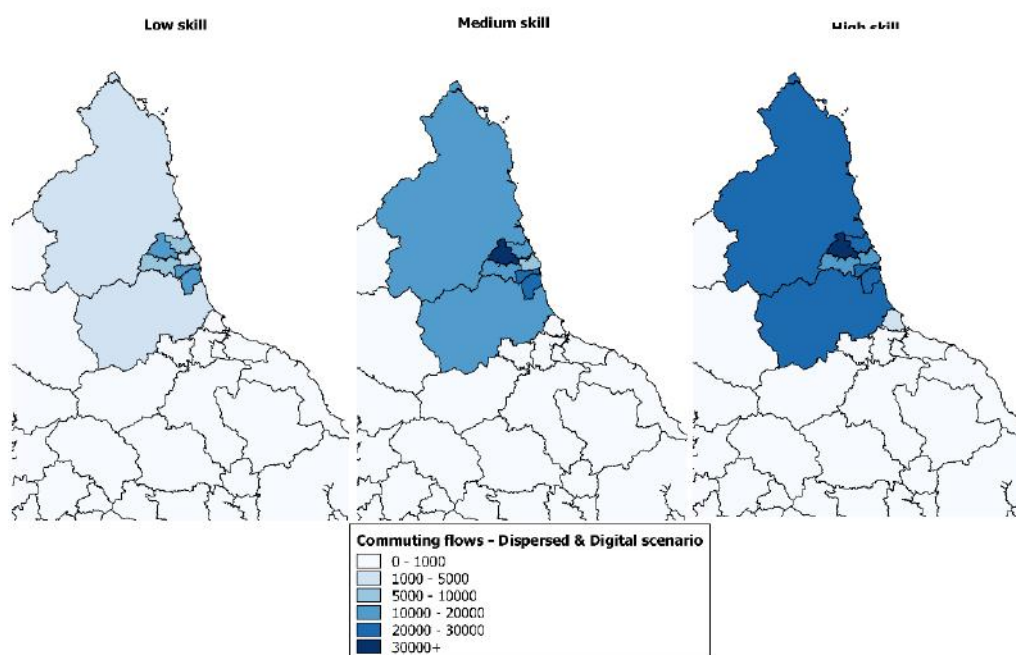
Source: Cambridge Econometrics.

Figure C.18: Origins of workers in Newcastle & Sunderland by skill level under the Compact & travel friendly scenario, 2050



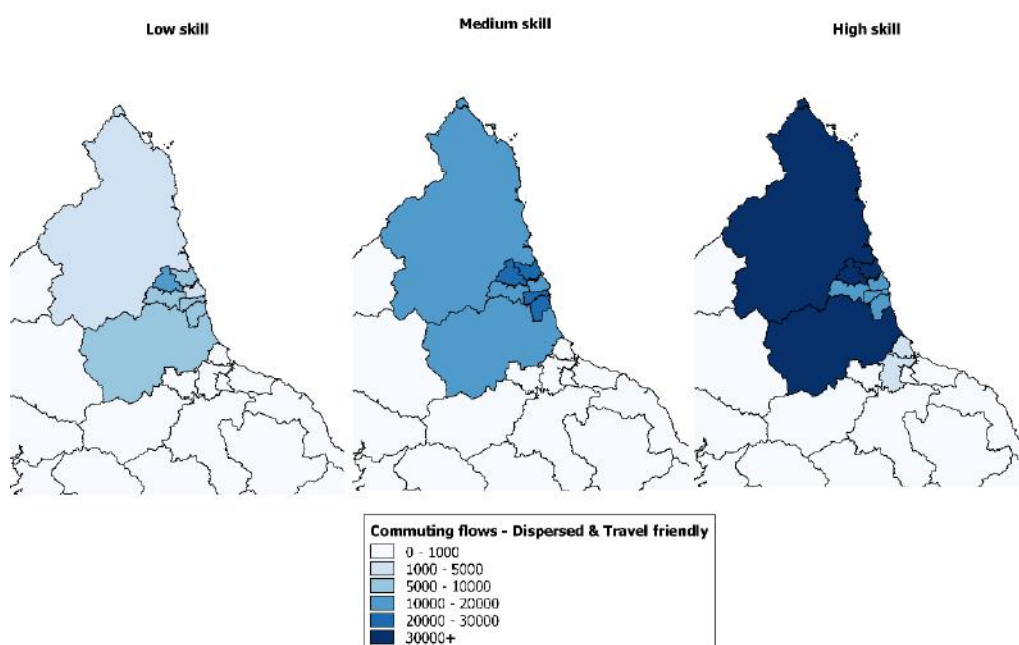
Source: Cambridge Econometrics.

Figure C.19: Origins of workers in Newcastle & Sunderland by skill level under the Dispersed & digital scenario, 2050



Source: Cambridge Econometrics.

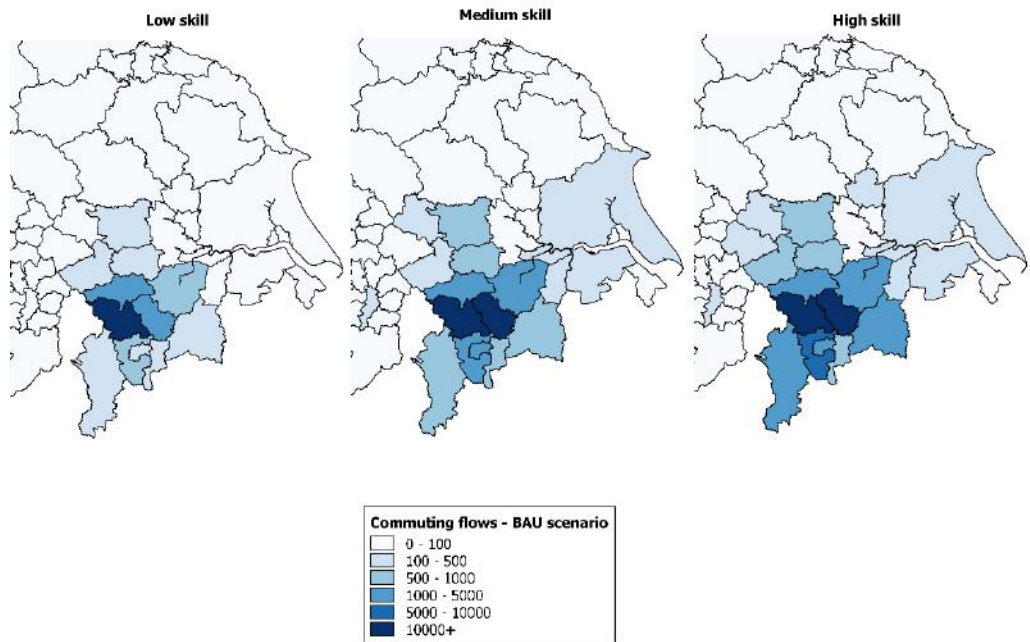
Figure C.20: Origins of workers in Newcastle & Sunderland by skill level under the Dispersed & travel friendly scenario, 2050



Source: Cambridge Econometrics.

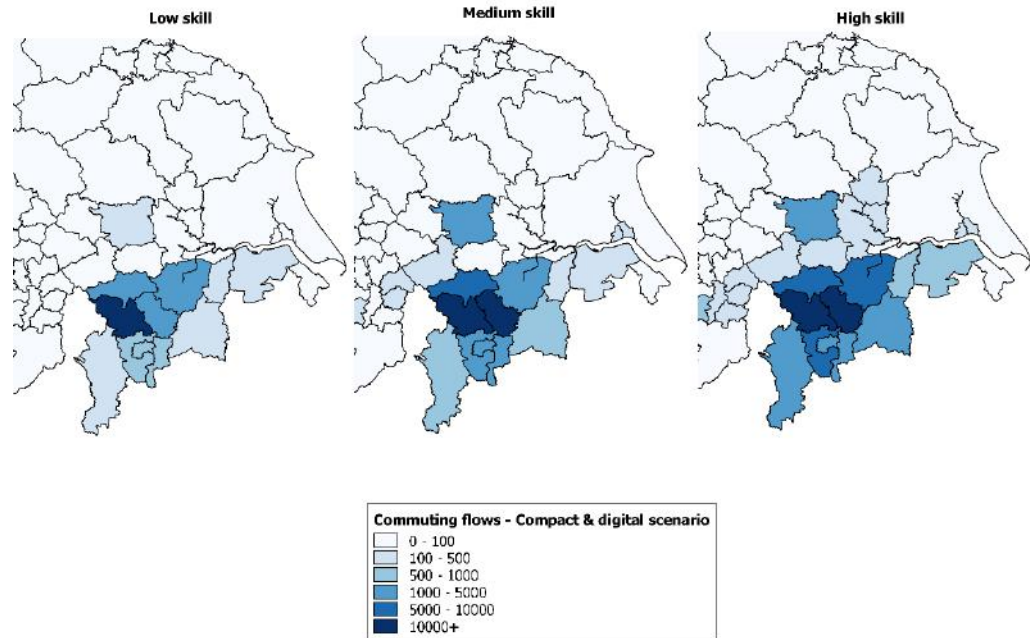
Sheffield

Figure C.21: Origins of workers in Sheffield by skill level under the BAU scenario, 2050



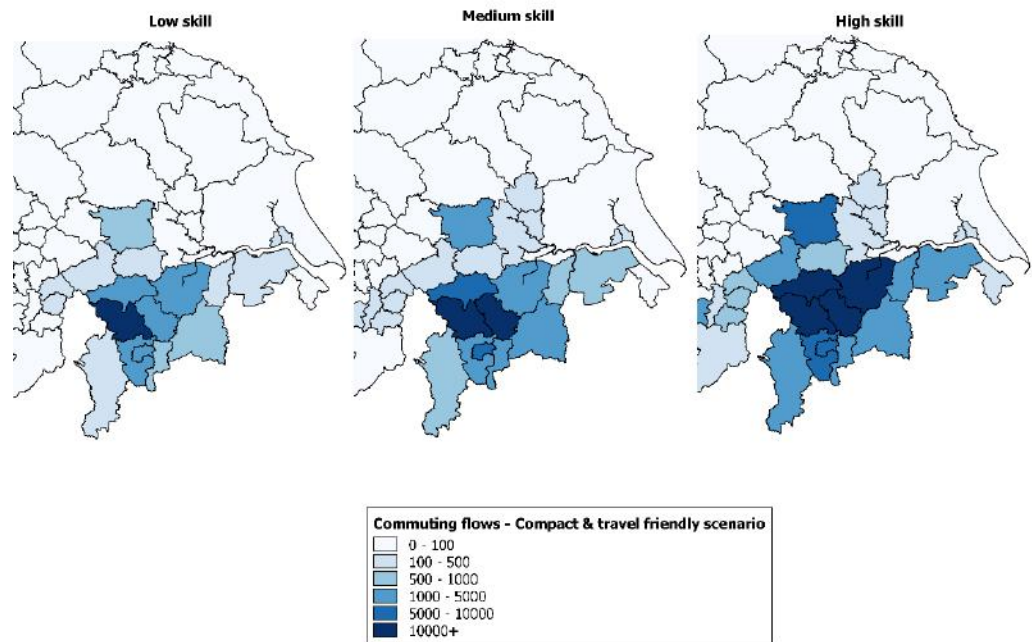
Source: Cambridge Econometrics.

Figure C.22: Origins of workers in Sheffield by skill level under the Compact & digital scenario, 2050



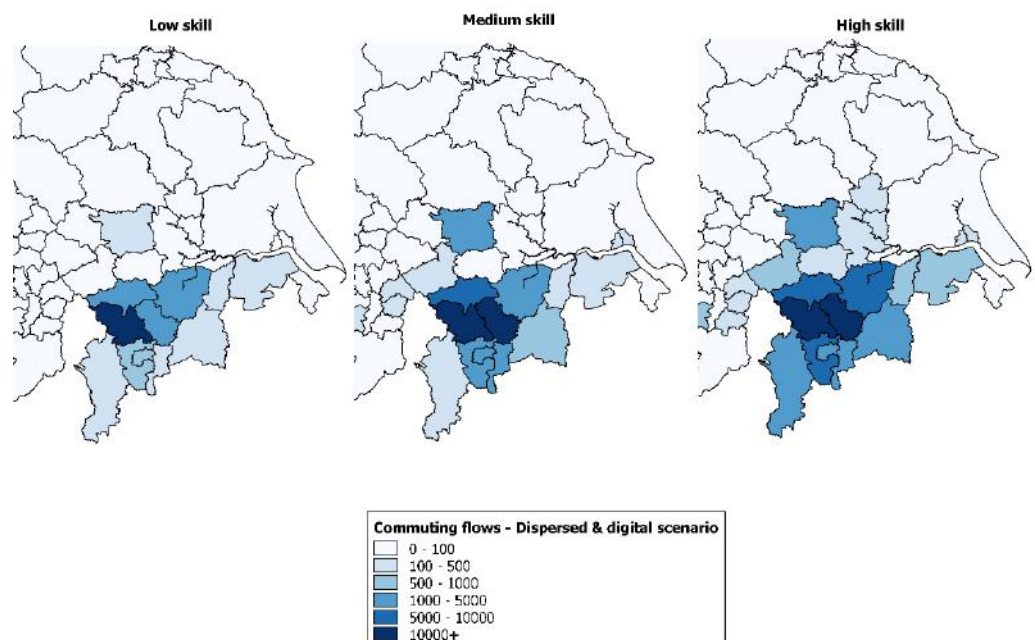
Source: Cambridge Econometrics.

Figure C.23: Origins of workers in Sheffield by skill level under the Compact & travel friendly scenario, 2050



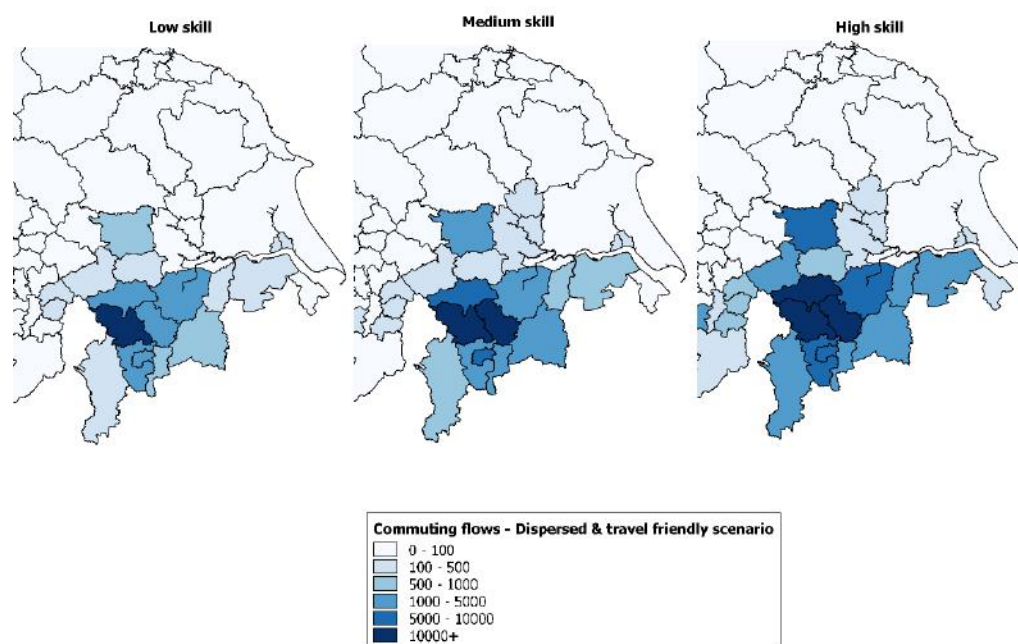
Source: Cambridge Econometrics.

Figure C.24: Origins of workers in Sheffield by skill level under the Dispersed & digital scenario, 2050



Source: Cambridge Econometrics.

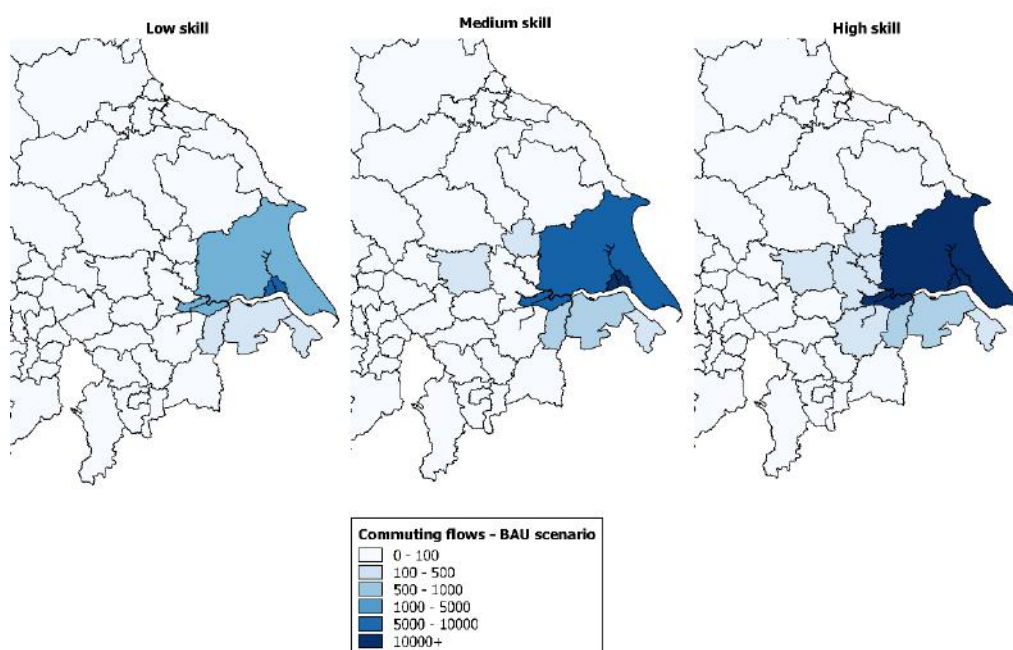
Figure C.25: Origins of workers in Sheffield by skill level under the Dispersed & travel friendly scenario, 2050



Source: Cambridge Econometrics.

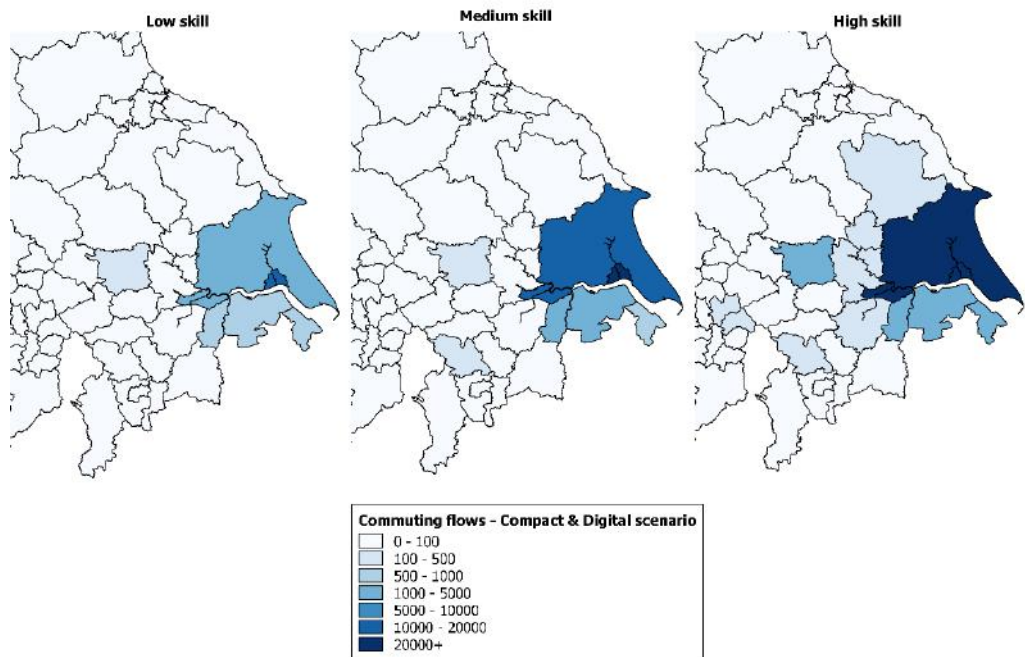
Hull

Figure C.26: Origins of workers in Hull by skill level under the BAU scenario, 2050



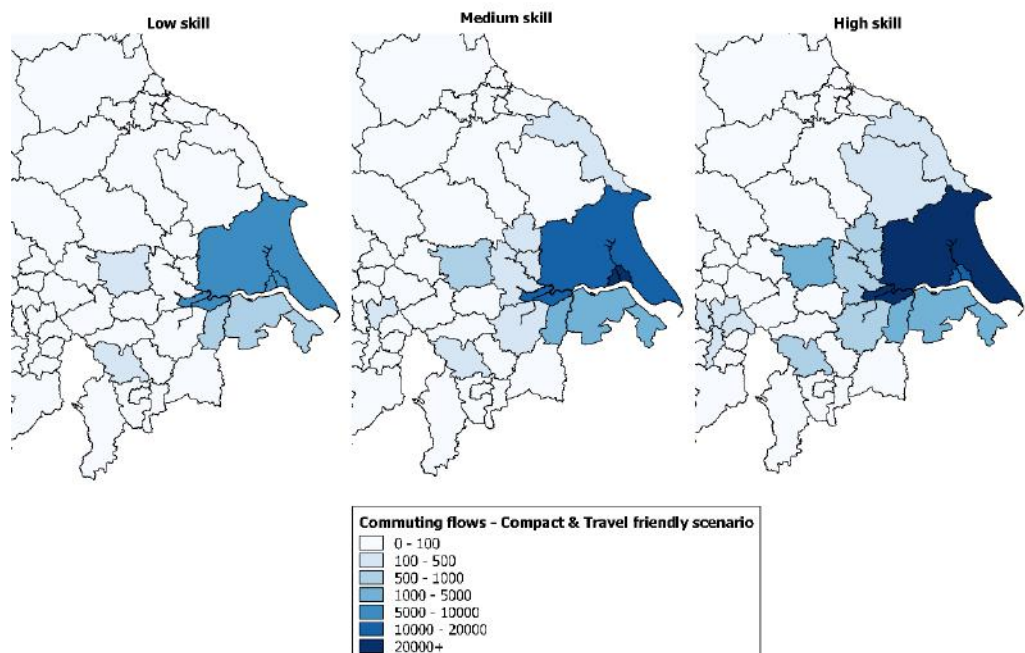
Source: Cambridge Econometrics.

Figure C.27: Origins of workers in Hull by skill level under the Compact & digital scenario, 2050



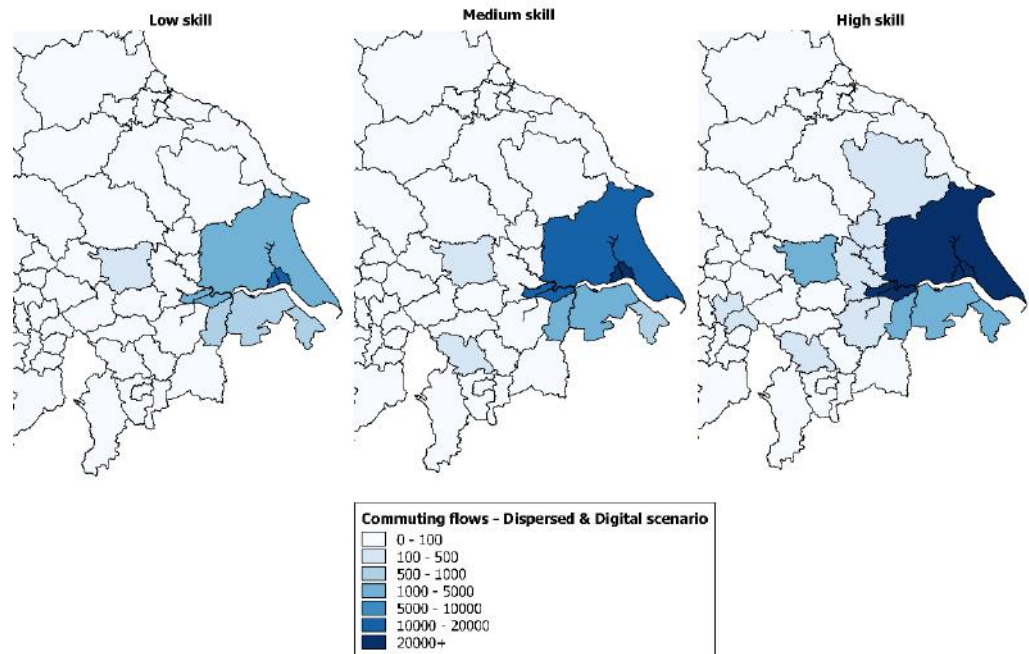
Source: Cambridge Econometrics.

Figure C.28: Origins of workers in Hull by skill level under the Compact & travel friendly scenario, 2050



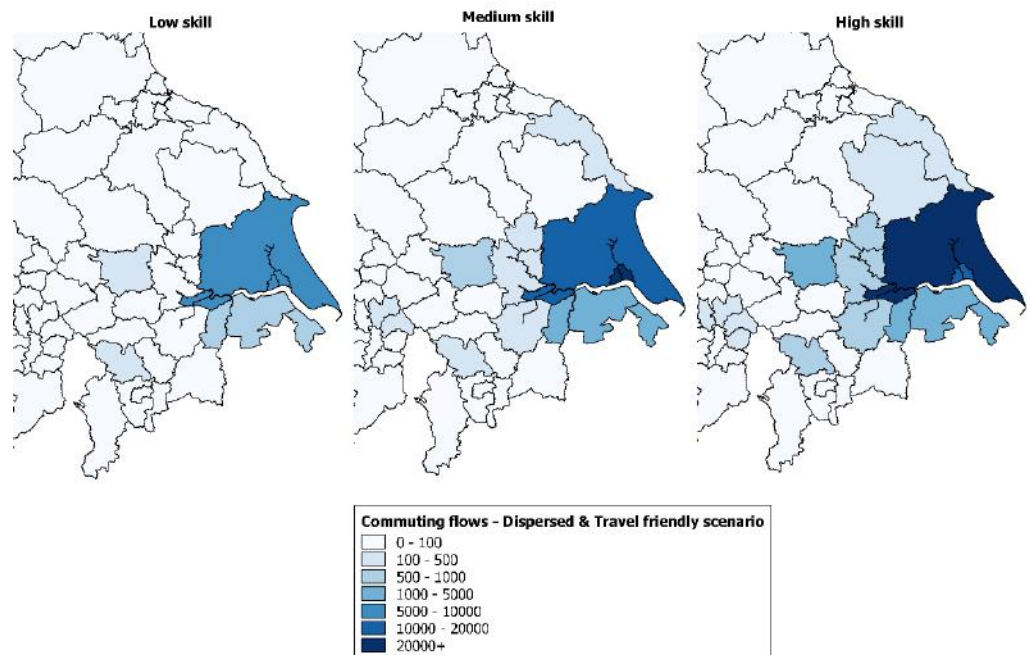
Source: Cambridge Econometrics.

Figure C.29: Origins of workers in Hull by skill level under the Dispersed & digital scenario, 2050



Source: Cambridge Econometrics.

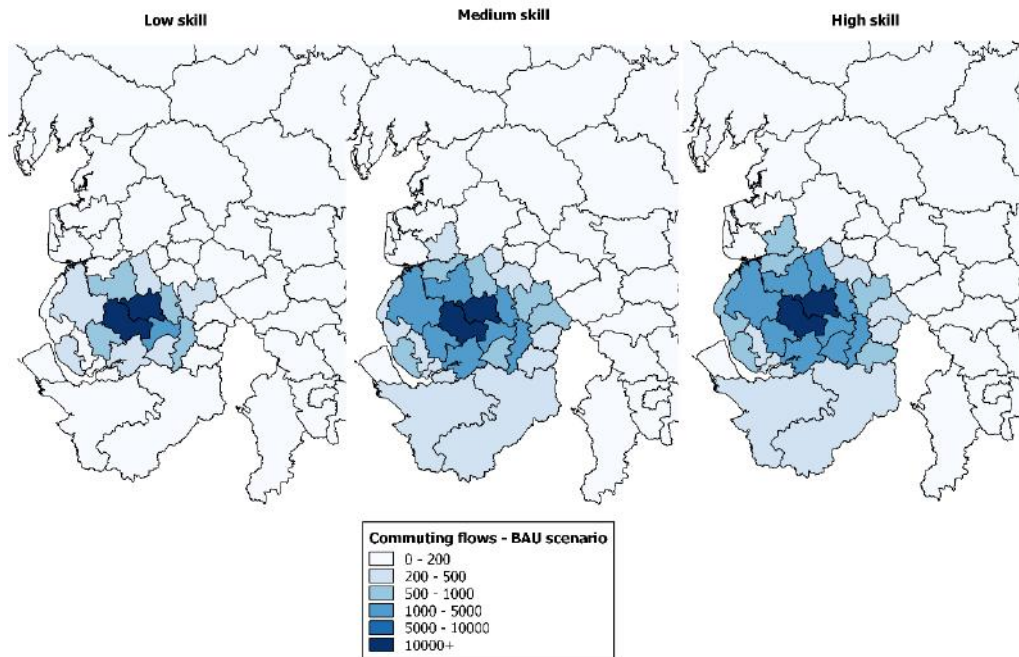
Figure C.30: Origins of workers in Hull by skill level under the Dispersed & travel friendly scenario, 2050



Source: Cambridge Econometrics.

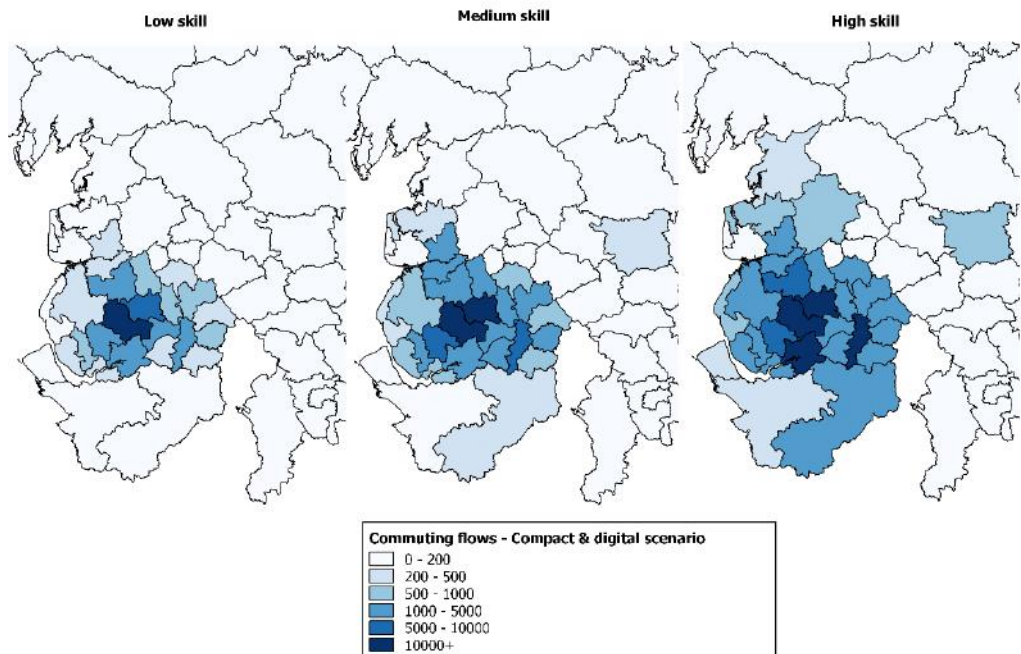
Wigan & Bolton

Figure C.31: Origins of workers in Wigan & Bolton by skill level under the BAU scenario, 2050



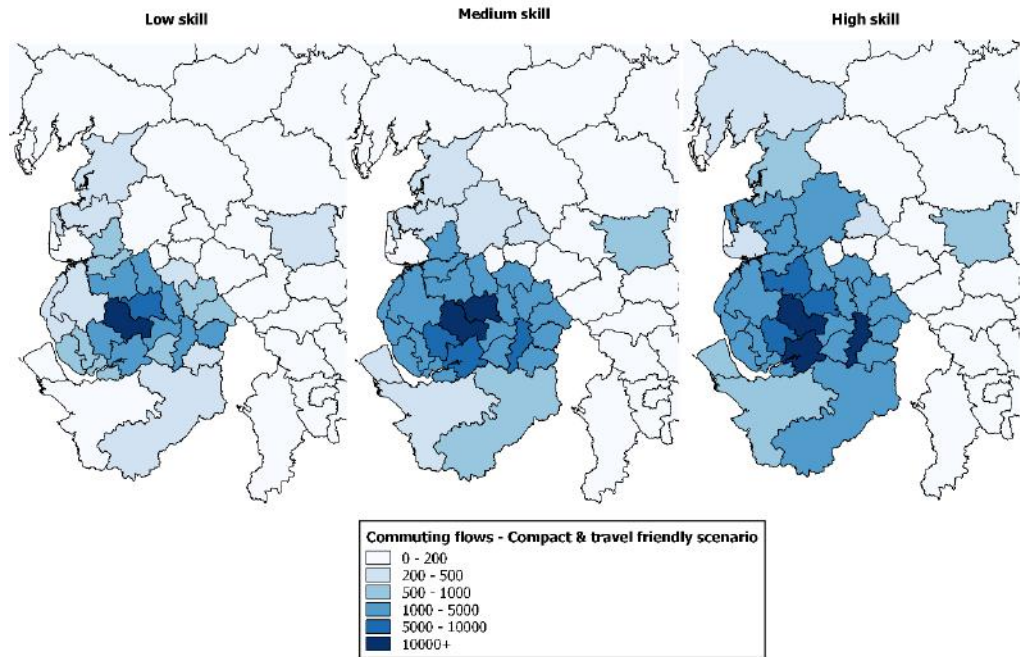
Source: Cambridge Econometrics.

Figure C.32: Origins of workers in Wigan & Bolton by skill level under the Compact & digital scenario, 2050



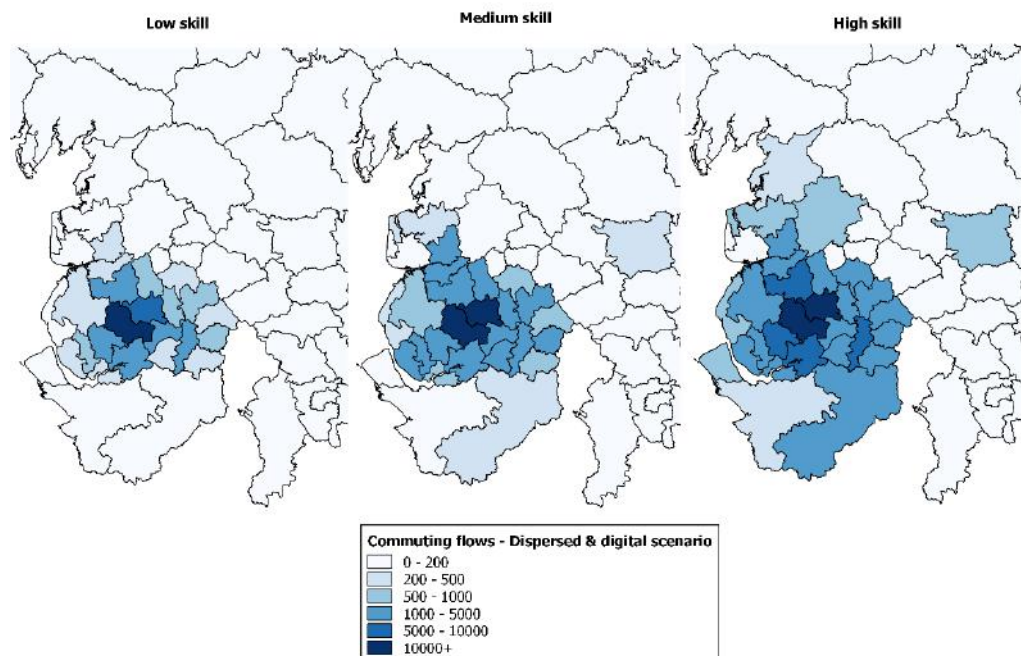
Source: Cambridge Econometrics.

Figure C.33: Origins of workers in Wigan & Bolton by skill level under the Compact & travel friendly scenario, 2050



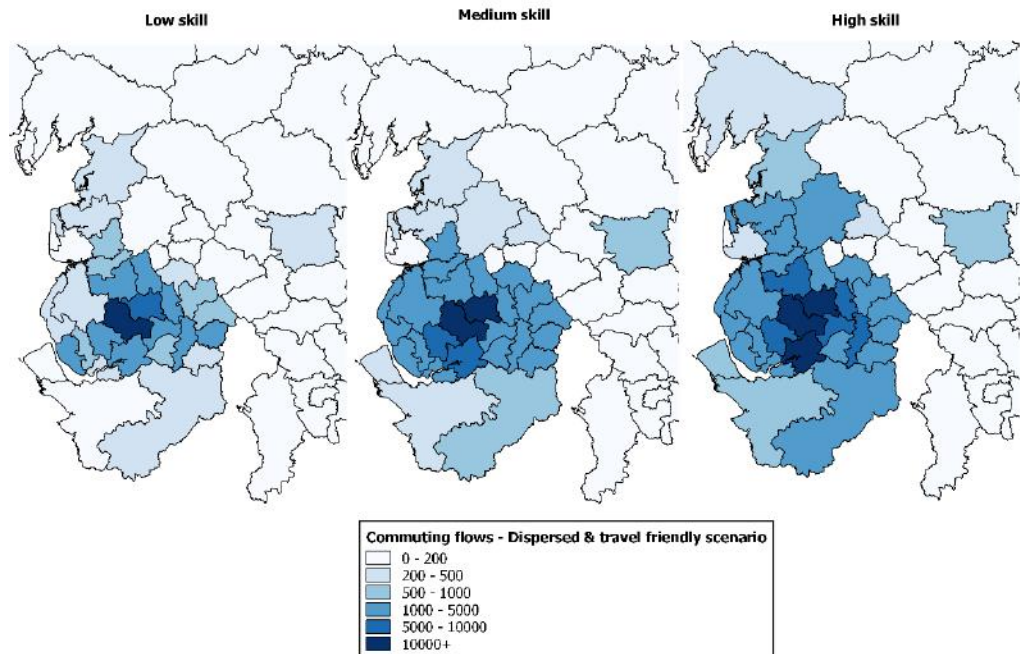
Source: Cambridge Econometrics.

Figure C.34: Origins of workers in Wigan & Bolton by skill level under the Dispersed & digital scenario, 2050



Source: Cambridge Econometrics.

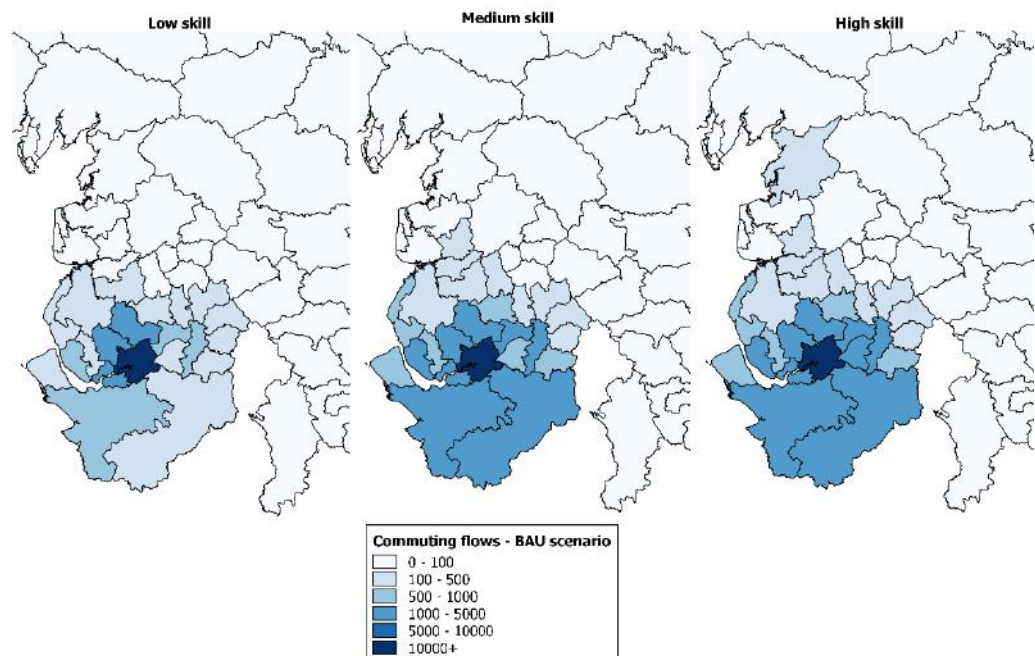
Figure C.35: Origins of workers in Wigan & Bolton by skill level under the Dispersed & travel friendly scenario, 2050



Source: Cambridge Econometrics.

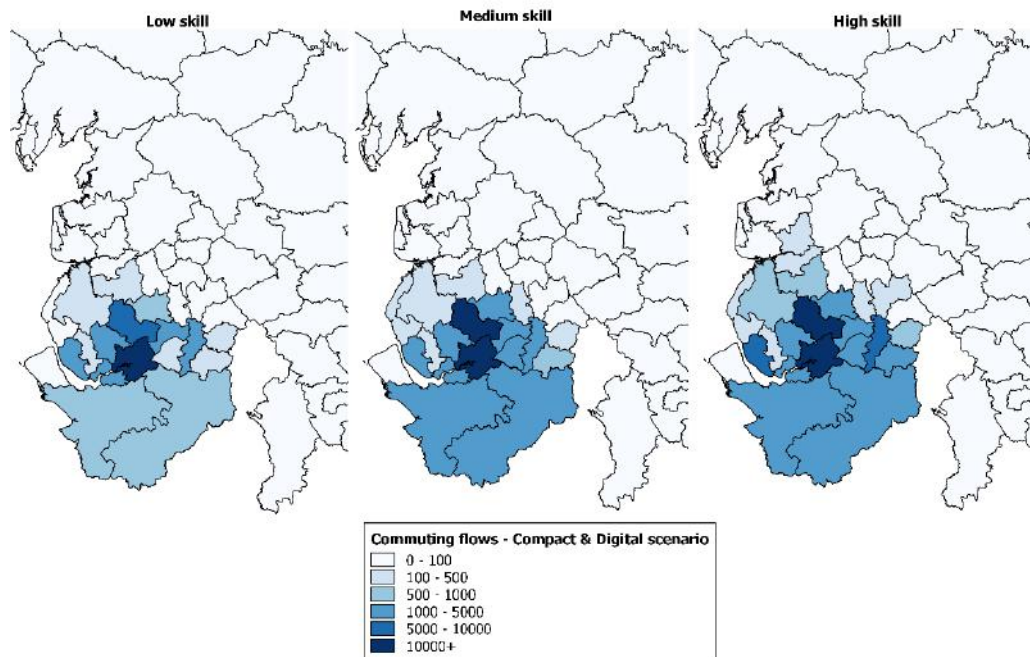
Warrington

Figure C.36: Origins of workers in Warrington by skill level under the BAU scenario, 2050



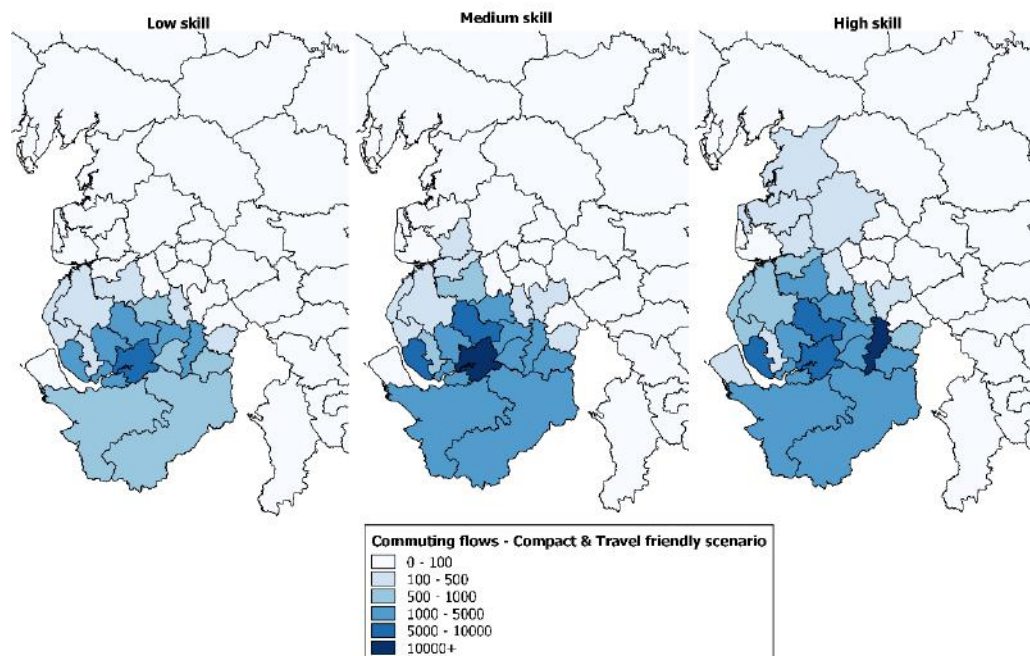
Source: Cambridge Econometrics.

Figure C.37: Origins of workers in Warrington by skill level under the Compact & digital scenario, 2050



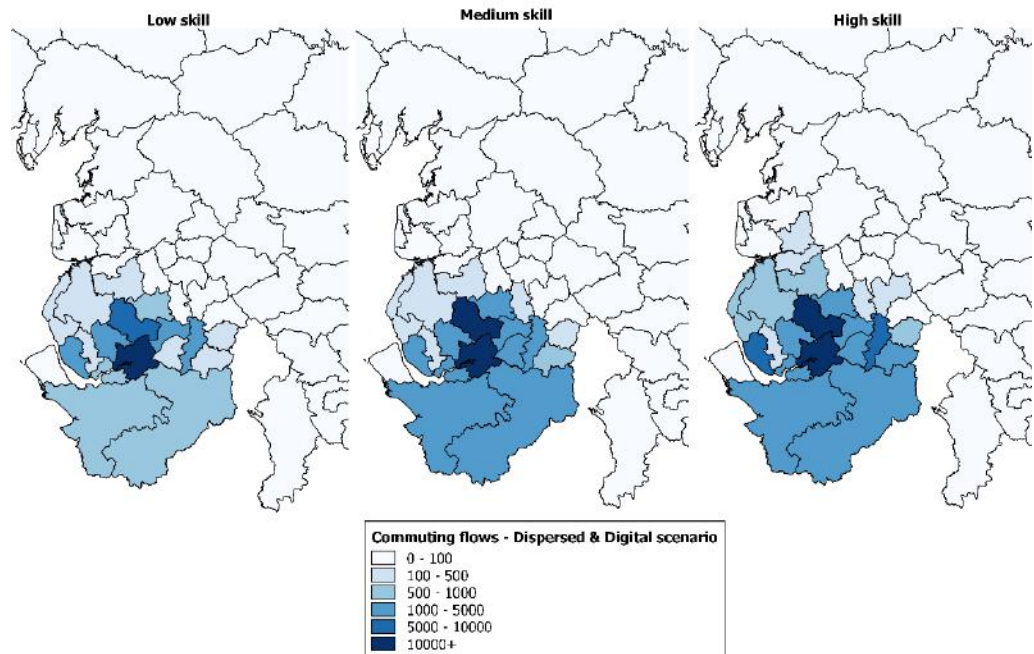
Source: Cambridge Econometrics.

Figure C.38: Origins of workers in Warrington by skill level under the Compact & travel friendly scenario, 2050



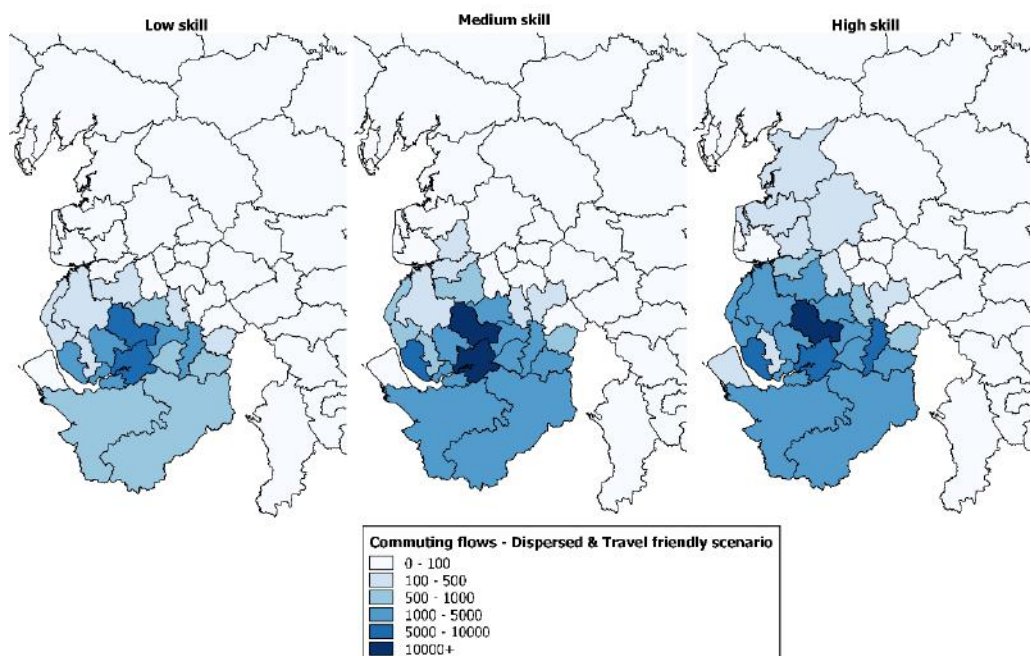
Source: Cambridge Econometrics.

Figure C.39: Origins of workers in Warrington by skill level under the Dispersed & digital scenario, 2050

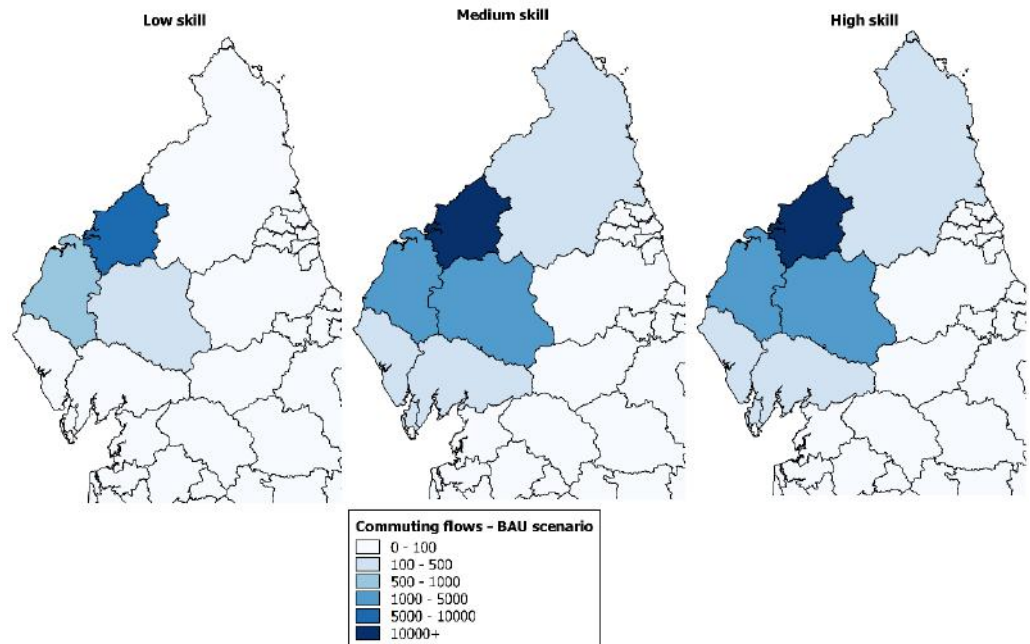


Source: Cambridge Econometrics.

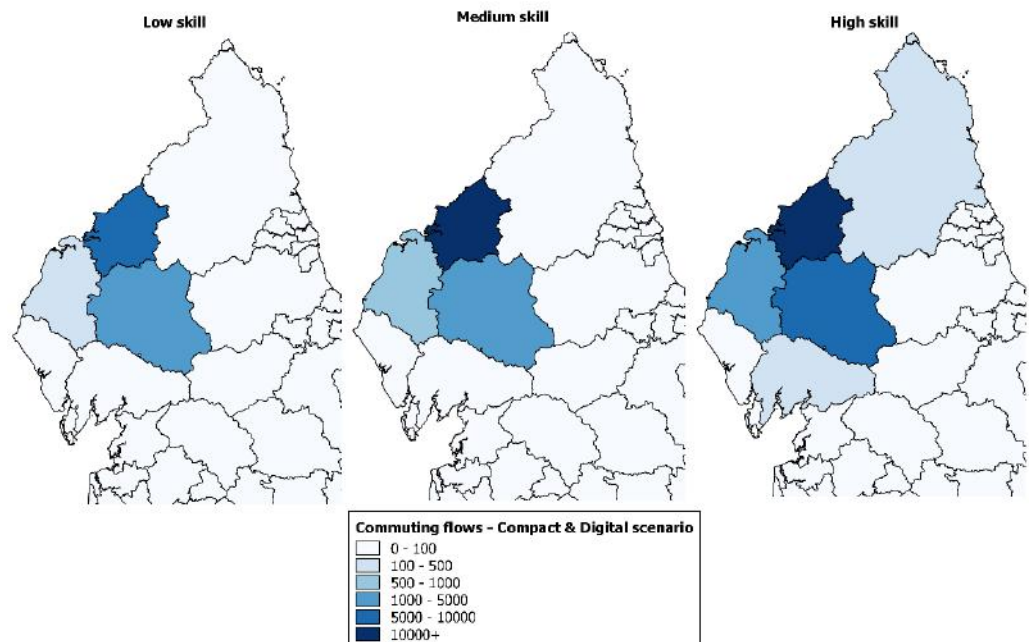
Figure C.40: Origins of workers in Warrington by skill level under the Dispersed & travel friendly scenario, 2050



Source: Cambridge Econometrics.

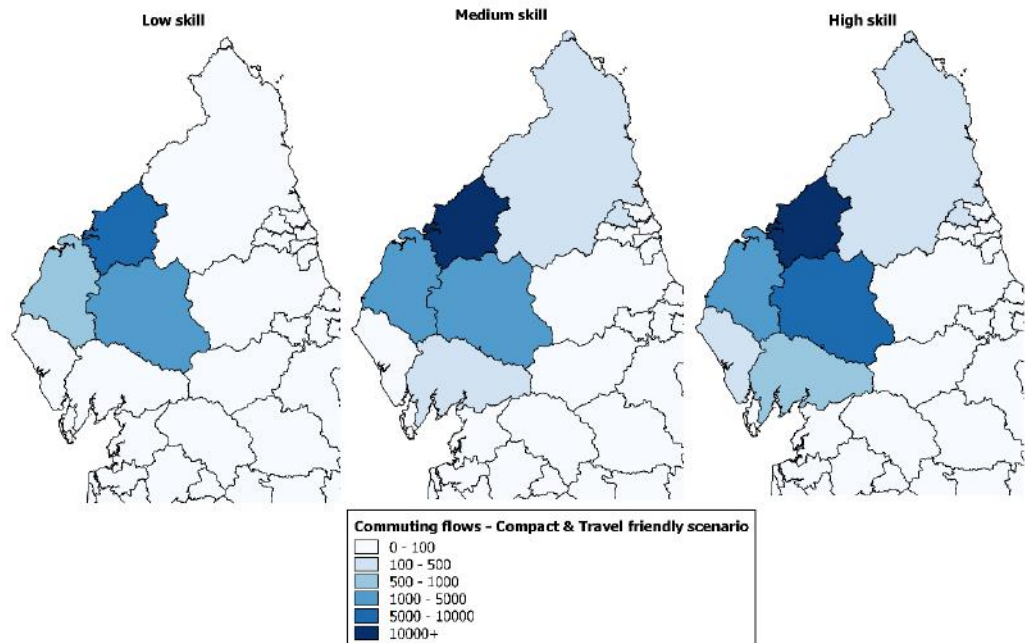
Carlisle**Figure C.41: Origins of workers in Carlisle by skill level under the BAU scenario, 2050**

Source: Cambridge Econometrics.

Figure C.42: Origins of workers in Carlisle by skill level under the Compact & digital scenario, 2050

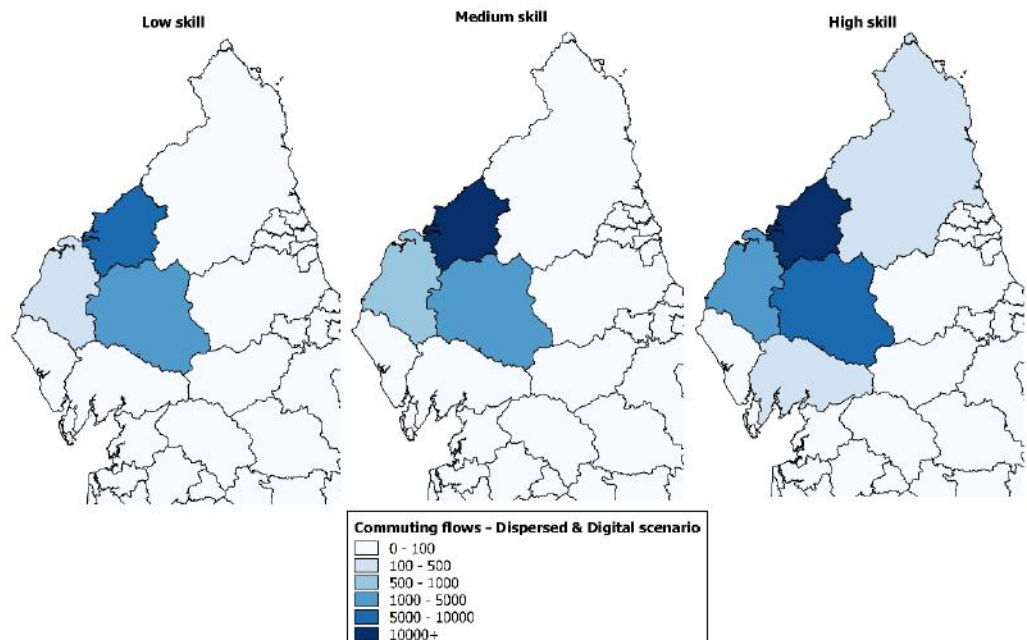
Source: Cambridge Econometrics.

Figure C.43: Origins of workers in Carlisle by skill level under the Compact & travel friendly scenario, 2050



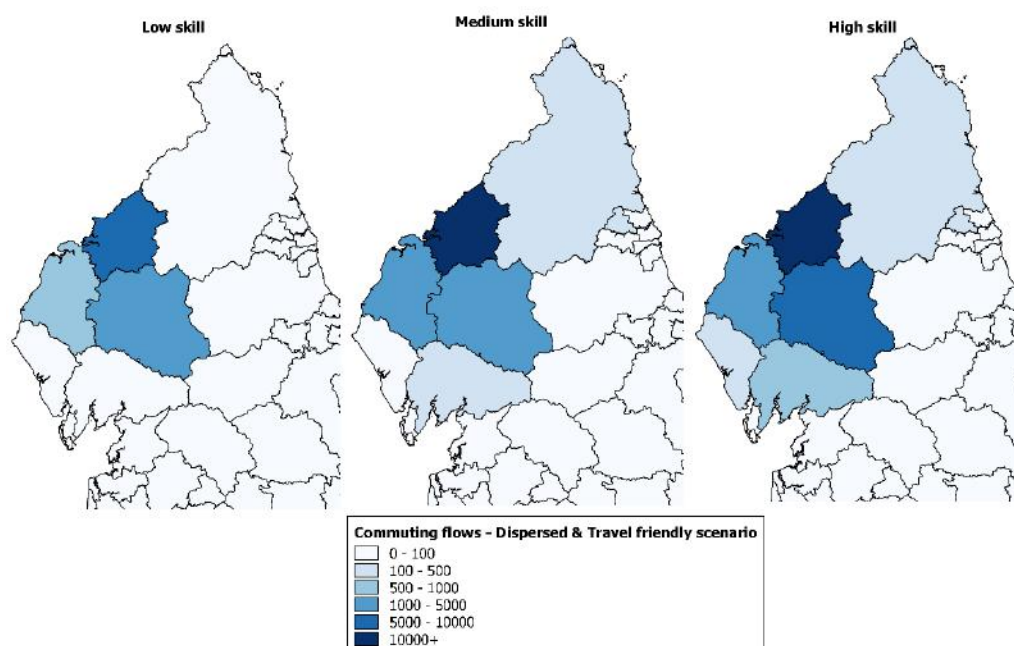
Source: Cambridge Econometrics.

Figure C.44: Origins of workers in Carlisle by skill level under the Dispersed & digital scenario, 2050



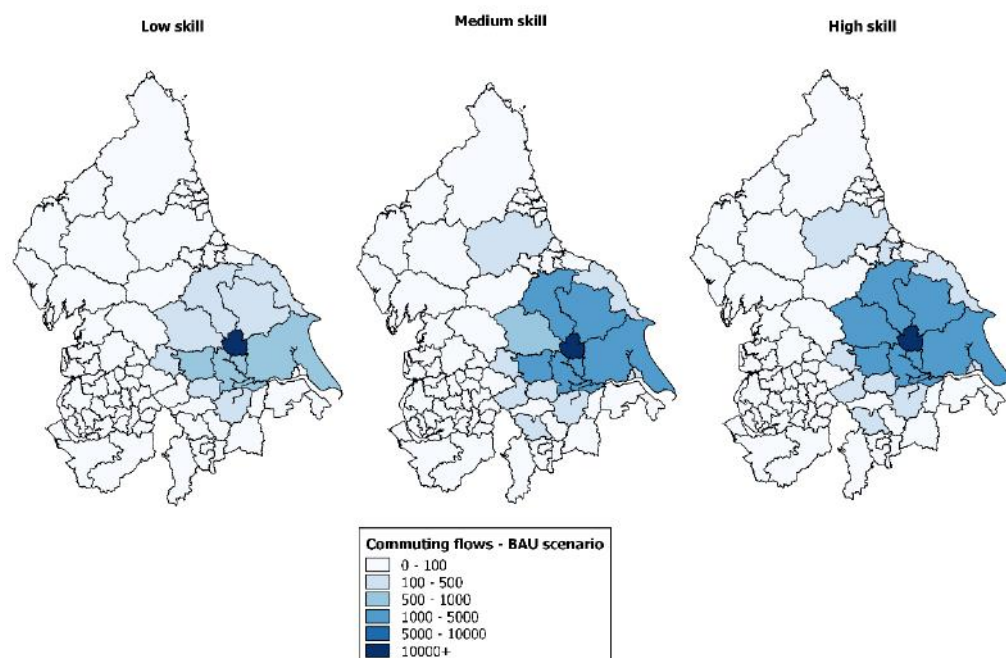
Source: Cambridge Econometrics.

Figure C.45: Origins of workers in Carlisle by skill level under the Dispersed & travel friendly scenario, 2050



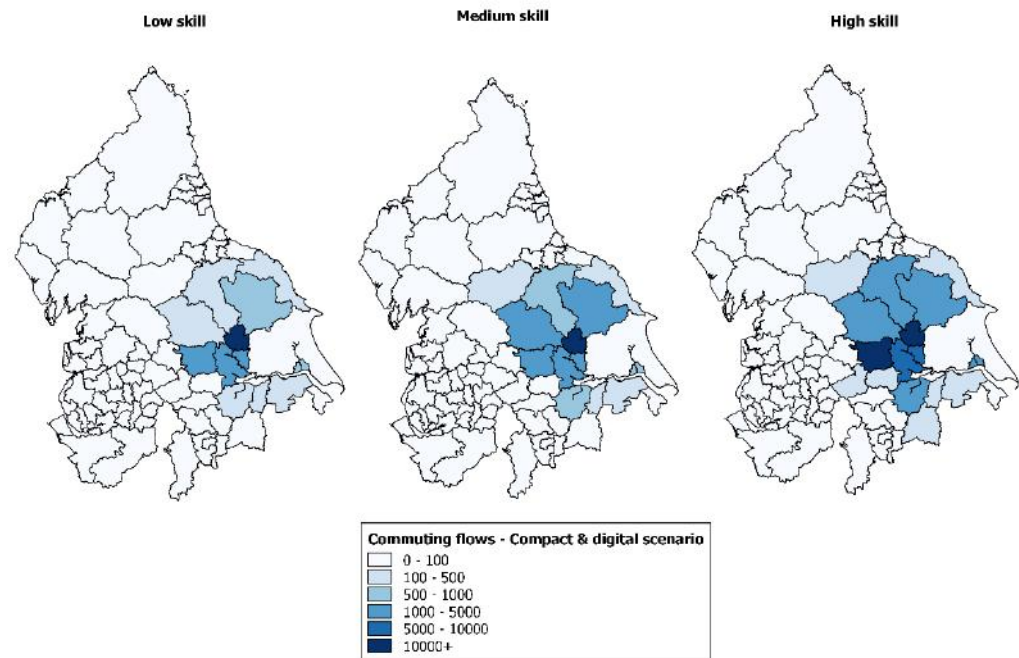
Source: Cambridge Econometrics.

York **Figure C.46: Origins of workers in York by skill level under the BAU scenario, 2050**



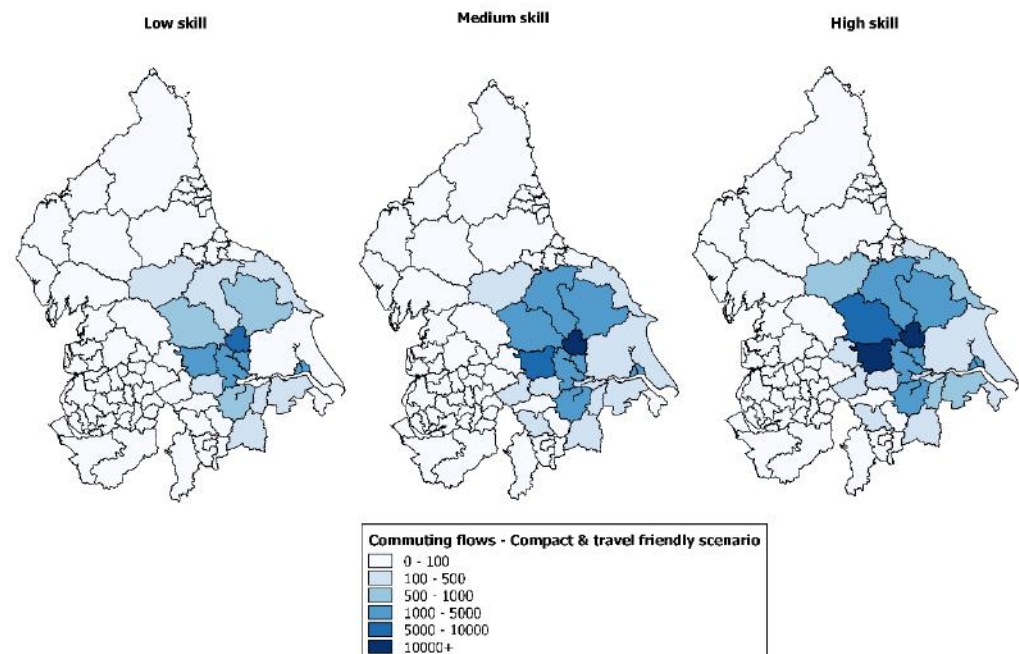
Source: Cambridge Econometrics.

Figure C.47: Origins of workers in York by skill level under the Compact & digital scenario, 2050



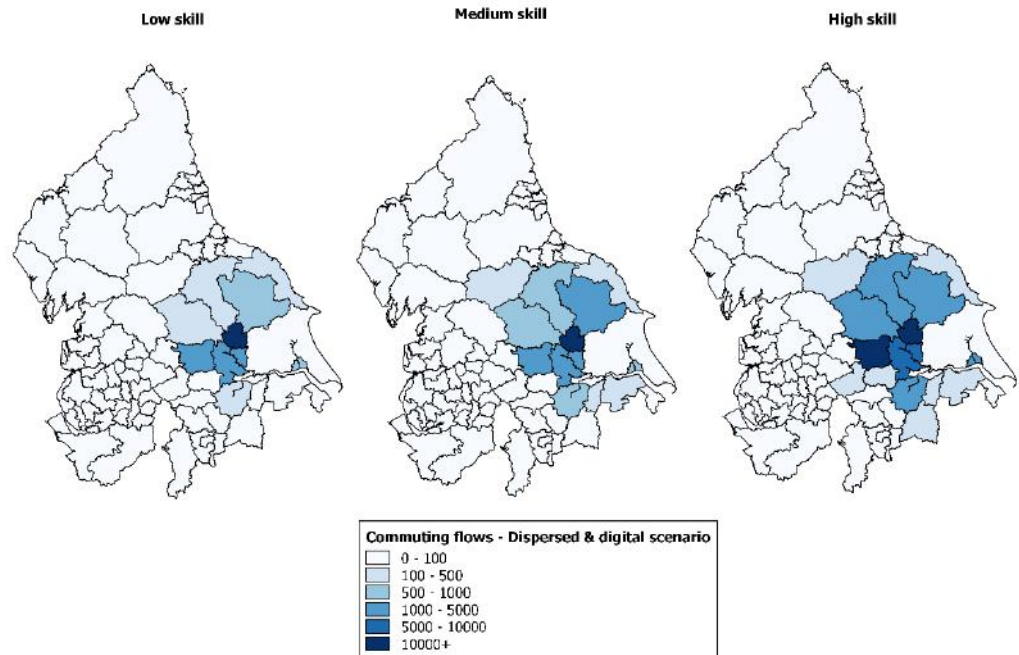
Source: Cambridge Econometrics.

Figure C.48: Origins of workers in York by skill level under the Compact & travel friendly scenario, 2050



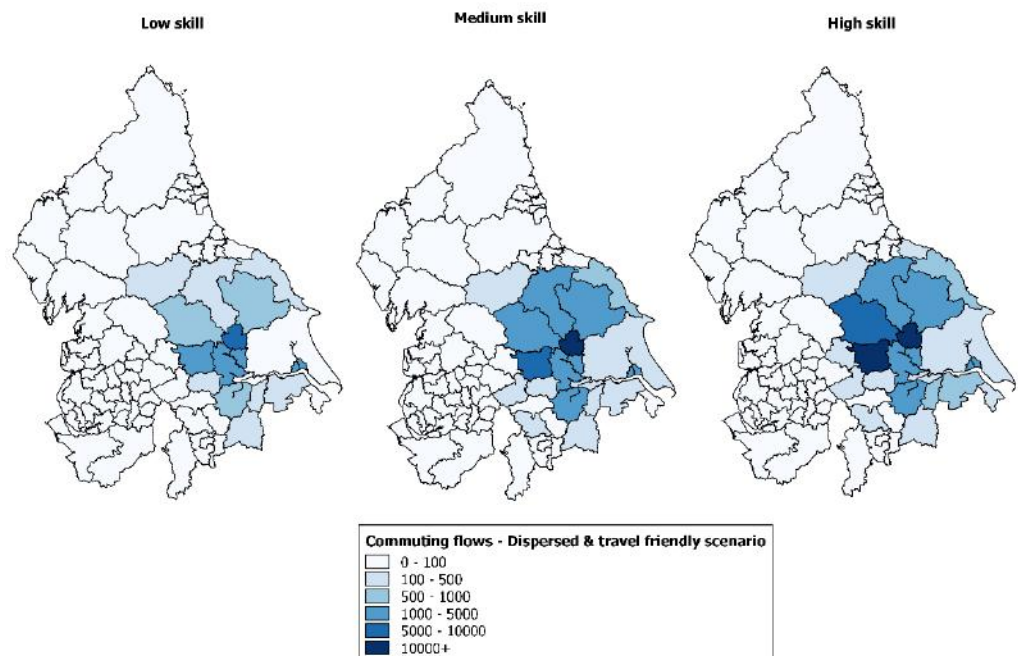
Source: Cambridge Econometrics.

Figure C.49: Origins of workers in York by skill level under the Dispersed & digital scenario, 2050



Source: Cambridge Econometrics.

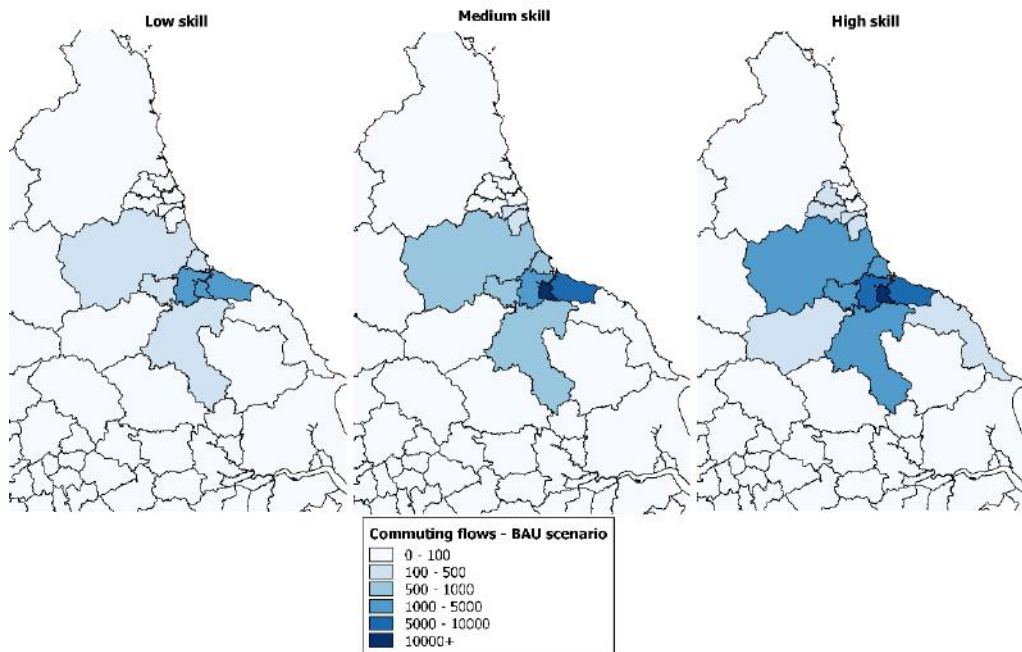
Figure C.50: Origins of workers in York by skill level under the Dispersed & travel friendly scenario, 2050



Source: Cambridge Econometrics.

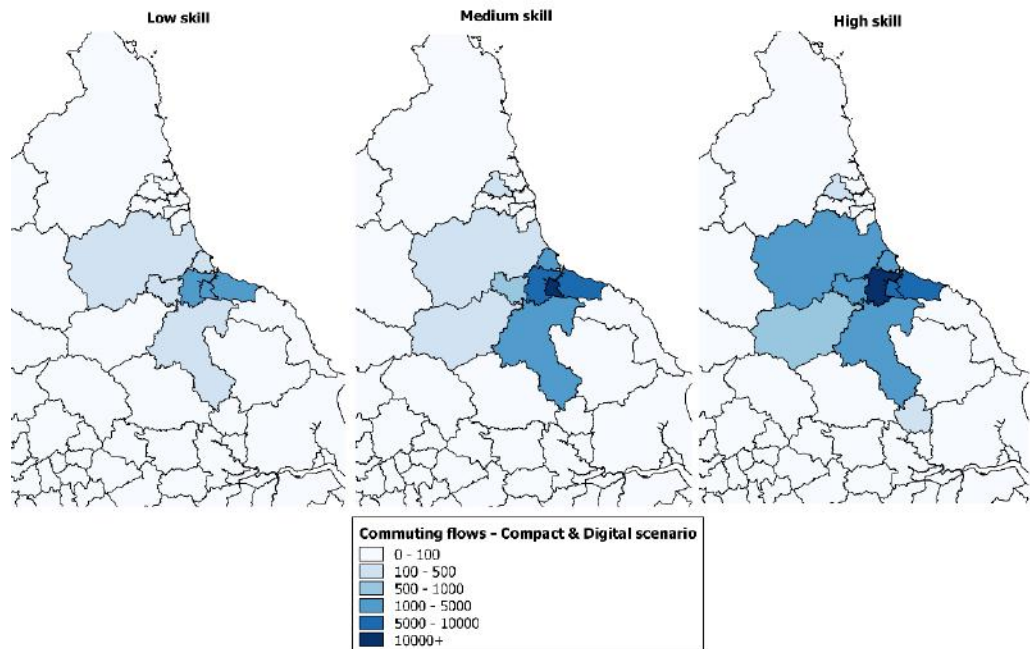
Middlesbrough

Figure C.51: Origins of workers in Middlesbrough by skill level under the BAU scenario, 2050



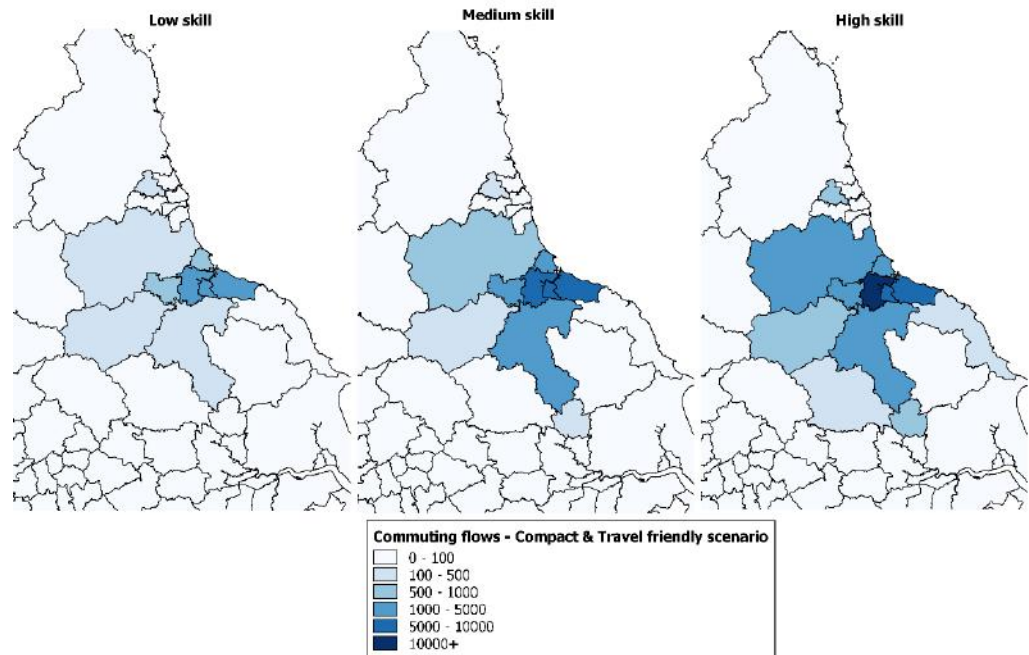
Source: Cambridge Econometrics.

Figure C.52: Origins of workers in Middlesbrough by skill level under the Compact & digital scenario, 2050



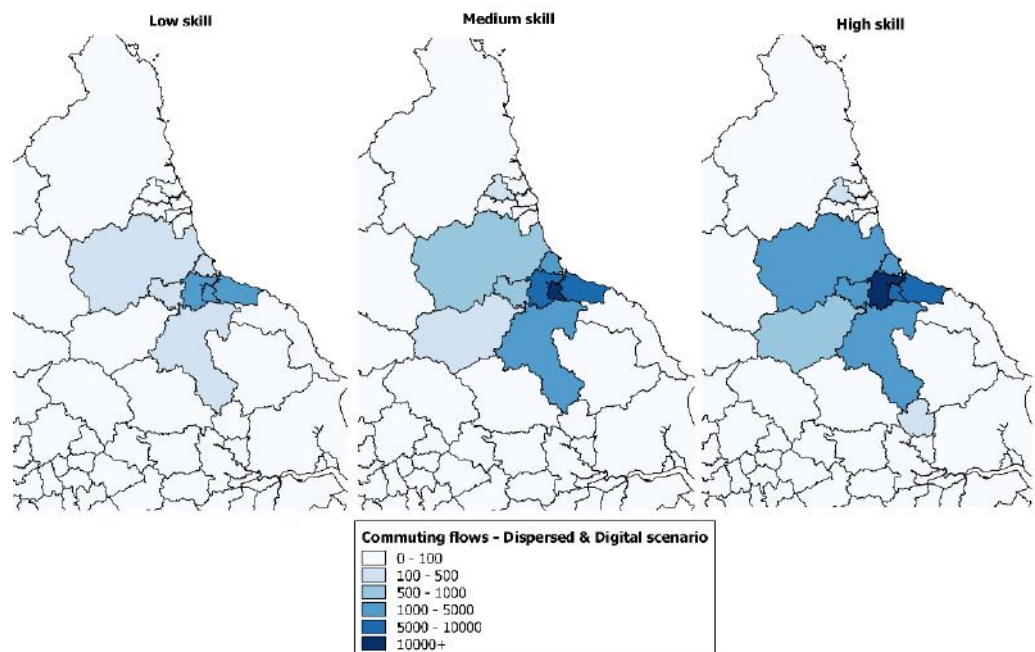
Source: Cambridge Econometrics.

Figure C.53: Origins of workers in Middlesbrough by skill level under the Compact & travel friendly scenario, 2050



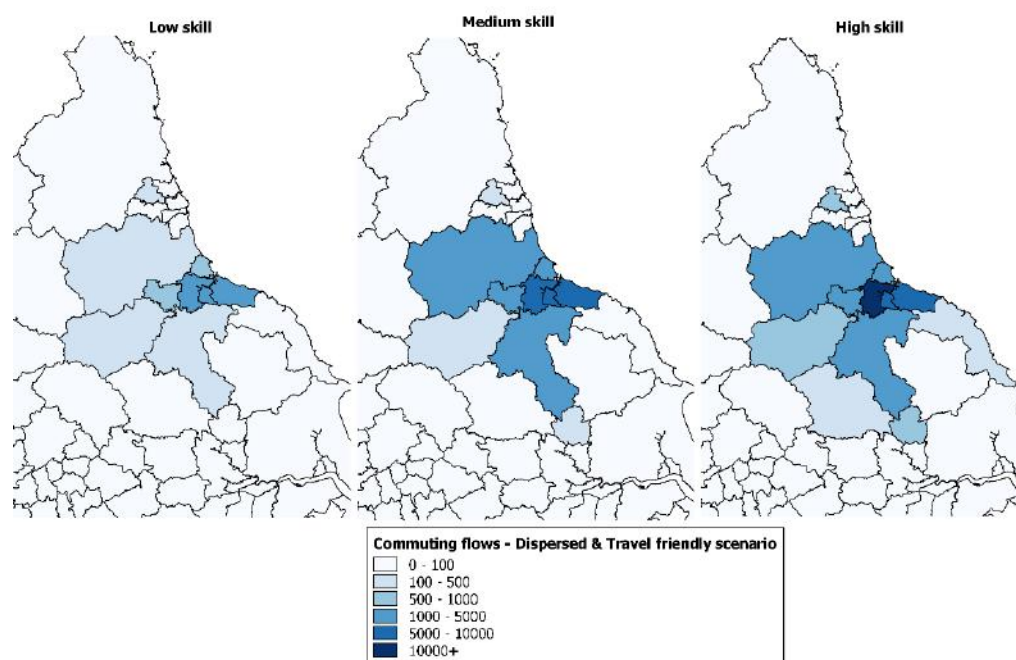
Source: Cambridge Econometrics.

Figure C.54: Origins of workers in Middlesbrough by skill level under the Dispersed & digital scenario, 2050



Source: Cambridge Econometrics.

Figure C.55: Origins of workers in Middlesbrough by skill level under the Dispersed & travel friendly scenario, 2050



Source: Cambridge Econometrics.